

Welsh Baccalaureate Advanced For Pupils

The Welsh Baccalaureate at Advanced level provides an opportunity for pupils to consolidate and progress the development of essential and employability skills.

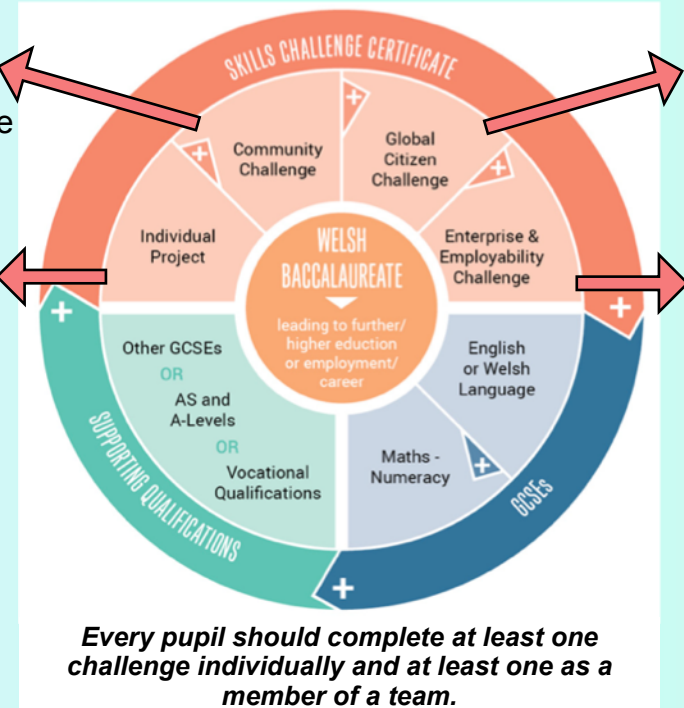
Creativity and Innovation Literacy Planning and Organising Numeracy
 Critical Thinking and Problem Solving Personal Effectiveness Digital Literacy

Community Challenge: An opportunity to make a positive contribution to the local, regional, national or international community, spending 30 hours, normally over a period of at least four weeks, actively carrying out the activity.

The Welsh Baccalaureate is based on:
 - Skills Challenge Certificate.
 - Supporting Qualifications.

Global Citizenship Challenge: An opportunity to explore a range of global issues and think critically about them. You will need to respond to the global issues and formulate ideas to tackle global problems and present ideas for possible solutions.

Individual Project: An Individual Project presented either as a written account (3,000 – 5,000 words in length) or an artefact/product supported by written evidence (1,500 – 3,000 words) exploring a subject with an emphasis on future educational or career aspirations.



Enterprise and Employability Challenge: An opportunity to focus on the preparation for their future career aspirations, develop an enterprising mindset and present an innovative concept/idea based on meeting the needs of customers and/or businesses.

Every pupil should complete at least one challenge individually and at least one as a member of a team.

The Supporting Qualifications include two mandatory GCSEs of English Language or Welsh Language together with Mathematics-Numeracy either before or during the advanced Welsh Baccalaureate. During the Advanced Welsh Baccalaureate pupils must achieve two A level qualifications at A* - E, or equivalent in order to achieve the Advanced Welsh Baccalaureate.

Component achievement is based on a learner's ability to meet the learning outcomes. Each component is awarded a summative grade:

- Level 3 Pass;
- Level 3 Merit;
- Level 3 Distinction.

Performance bands have been written to enable learners to demonstrate their ability to meet the learning outcome. All components have three performance bands, each being allocated a range of 3 points. Where there is no evidence or work is not worthy of credit a score of 0 marks should be allocated.

Performance Band	Band 1	Band 2	Band 3
Points	1 - 3	4 - 6	7 - 9

Assessors will allocate a score for each learning outcome and collate the points across the whole component to provide a total score. The summative grade for the component will be calculated from the total score.

The Advanced Skills Certificate is worth 1 A level (A* - E) to pupils.