

## Skills challenge certificate

**Community challenge:** 10 hours of teaching & learning, maximum of 40 hours of controlled assessment which includes 30 hours of participation over at least 4 weeks.

**TASKS:** 1) Community activity proposal 2) Confirmation statement 3) Personal reflection presentation.

**Global citizenship challenge:** 50 hours of teaching & learning, 20 hours of controlled assessment.

**TASKS:** 1) Personal standpoint 2) Global choices conference 3) Personal reflection.

**Enterprise and employability challenge:** 70 hours of teaching & learning, 50 hours of controlled assessment.

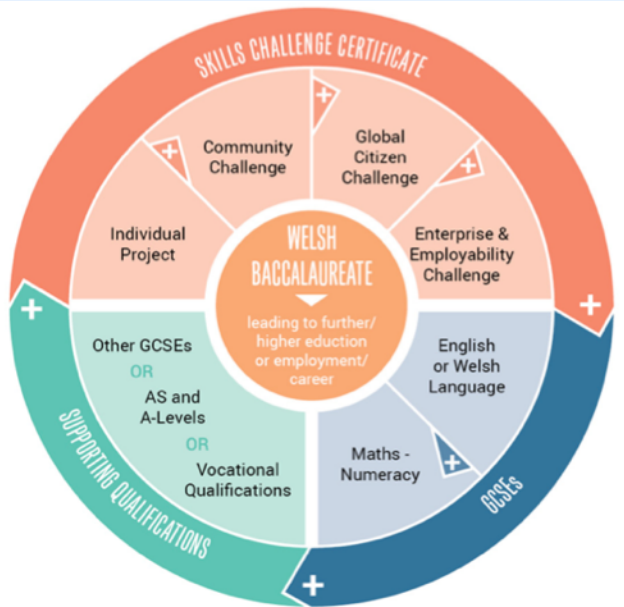
**TASKS:** 1) Pen portrait 2) Innovation proposal and presentation 3) Destination plan 4) Personal reflection presentation.

*It's important that all pupils are registered on the e-portfolio system so that they are able to upload their work.*

**Individual project:** 40 hours of teaching & learning, 80 hours to complete the project.

**TASK:** Individual project to be presented either as a written account (3,000 – 5,000 words in length) or an artefact/product supported by written evidence (1,500 and 3,000 words). Individual Project and learners are encouraged to explore a subject with an emphasis on future educational or career aspirations.

The Welsh Baccalaureate is based on:  
 - Skills Challenge Certificate.  
 - Supporting Qualifications.



**Every pupil should complete at least one challenge individually and at least one as a member of a team.**

The Supporting Qualifications include two mandatory GCSEs of English Language or Welsh Language together with Mathematics-Numeracy either before or during the advanced Welsh Baccalaureate. During the Advanced Welsh Baccalaureate pupils must achieve two A level qualifications at A\* - E, or equivalent in order to achieve the Advanced Welsh Baccalaureate.

**The central focus of the Advanced Welsh Baccalaureate is to provide opportunities for pupils to reinforce and develop essential and employability skills.**

Creativity and Innovation    Critical Thinking and Problem Solving    Personal Effectiveness    Digital Literacy  
 Numeracy    Planning and Organisation    Literacy

Component achievement is based on a learner's ability to meet the learning outcomes. Each component is awarded a summative grade:

- Level 3 Pass;
- Level 3 Merit;
- Level 3 Distinction.

Performance bands have been written to enable learners to demonstrate their ability to meet the learning outcome. All components have three performance bands, each being allocated a range of 3 points. Where there is no evidence or work is not worthy of credit a score of 0 marks should be allocated.

Performance Band	Band 1	Band 2	Band 3
Points	1 - 3	4 - 6	7 - 9

Assessors will allocate a score for each learning outcome and collate the points across the whole component to provide a total score. The summative grade for the component will be calculated from the total score.

## The Advanced Skills Certificate is worth 1 A level (A\* - E) to pupils.

Submitting Entries	January 2016	June 2016	January 2017	June 2017
Enterprise and Employability Challenge	✓	✓	✓	✓
Global Citizenship Challenge	✓	✓	✓	✓
Community Challenge	✓	✓	✓	✓
Individual Project	X	X	✓	✓
Cash-in	X	X	X	✓