

Skills challenge certificate

Community challenge: 10 hours of teaching & learning, 15 hours of controlled assessment which includes 10 hours of participation. The tasks for this challenge must be submitted on the e-portfolio system.

TASKS: 1) Skills audit 2) Plan 3) Participation record and confirmation statement 4) Personal reflection

It's important that all pupils are registered on the e-portfolio system so that they are able to upload their work.

Global citizenship challenge: 15 hours of teaching & learning, 10 hours of controlled assessment.

TASKS: 1) Personal standpoint 2) Raising awareness pack 3) Personal reflection

Enterprise and employability challenge: 10 hours of teaching & learning, 20 hours of controlled assessment.

TASKS: 1) Skills audit, development plan, team role application 2) Visual display, minutes of team meetings 3) Personal record and confirmation statement 4) Personal reflection

Individual project: 40 hours for the teaching, learning and to complete the project.

TASK: Written project of 1,000 – 2,000 words in length. Written work should be word processed and include a variety of graphs, images, statistical tables, diagrams and drawings.

The Skills Certificate is worth 1 GCSE to pupils

Submitting Entries

	January 2016	June 2016	January 2017	June 2017
Enterprise and Employability Challenge	✓	✓	✓	✓
Global Citizenship Challenge	✓	✓	✓	✓
Community Challenge	✓	✓	✓	✓
Individual Project	X	X	✓	✓
Cash-in	X	X	X	✓

Component achievement is based on a learner's ability to meet the learning outcomes. Each component is awarded a summative grade;

- Level 1 Pass;
- Level 2 Pass;
- Level 2 Merit;
- Level 2 Distinction.

Performance bands enable learners to demonstrate their ability to meet the learning outcome. All components have four performance bands, each being allocated a range of 3 points. Where there is no evidence or work is not worthy of credit a score of 0 marks should be allocated.

Performance Band	Band 1	Band 2	Band 3	Band 4
Points	1 - 3	4 - 6	7 - 9	10 - 12

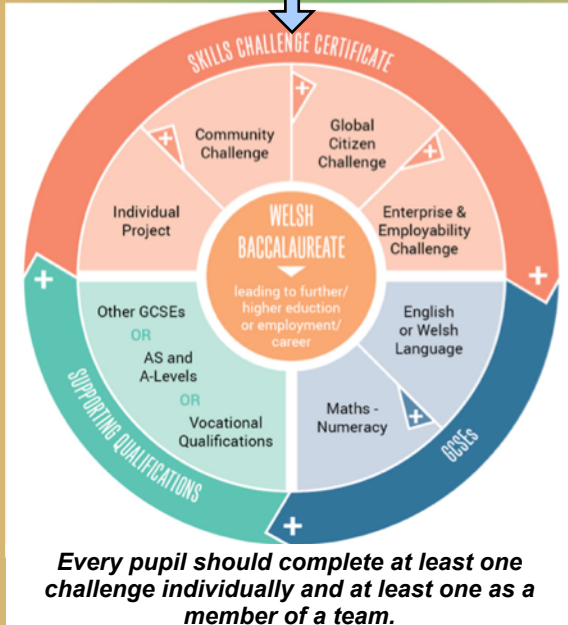
Assessors will allocate a score for each learning outcome and collate the points across the whole component to provide a total score. The summative grade for the component will be calculated from the total score.

The following table provides details of the total scores available for each of the four components of the Skills Challenge Certificate.

Component	Total score
Individual Project	0 - 96
Enterprise and Employability Challenge	0 - 36
Global Citizenship Challenge	0 - 36
Community Challenge	0 - 36

The Welsh Baccalaureate is based on:

- Skills Challenge Certificate.
- Supporting Qualifications.



Every pupil should complete at least one challenge individually and at least one as a member of a team.

The skills to be developed are: **Literacy, Numeracy, Digital literacy, Critical thinking and problem solving, Planning and organisation, Creativity and innovation, Personal effectiveness.**

The Supporting Qualifications include two mandatory GCSEs of English Language or Welsh Language together with Mathematics-Numeracy. A further three GCSEs are also required, of which two may be of equivalent qualifications (BTEC).

It is possible to achieve the qualification at **NATIONAL** level or at **FOUNDATION** level.

To meet the **NATIONAL** Welsh Baccalaureate requirements all five of the Supporting Qualifications must be achieved at grades A*-C.

- GCSE English Language or GCSE Welsh Language at grade A*-C;
- GCSE Mathematics - Numeracy at grade A*-C;
- A minimum of three further GCSEs grade A*-C.

• For the **FOUNDATION** Welsh Baccalaureate the Supporting Qualifications must be achieved at grades A*-G.

- GCSE English Language or GCSE Welsh Language at grade A* - G;
- GCSE Mathematics - Numeracy at grade A* - G;
- A minimum of three further GCSEs grade A*-G.

The National Skills Challenge Certificate is graded A*-C. For a National award, learners must achieve all of the components, the Individual Project and the three Challenges, with a minimum of 80% at level 2 and the further 20% at level 1.