



GwE Bulletin



Please share our Bulletin with your whole staff team in your school and encourage all your colleagues to subscribe to our [mailing list](#).

Diolch

STAFF ADDYSGU CYMRU SCHOOL STAFF



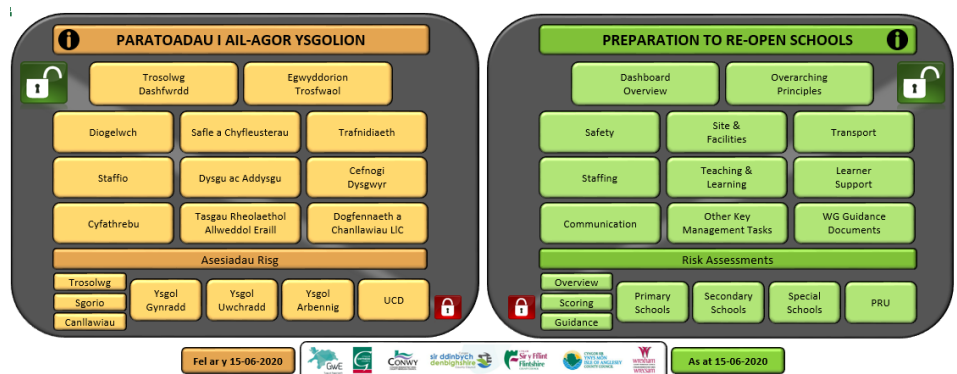
Message from GwE and the Region's Local Authorities

As you know, the region's Local Authorities have been working in close partnership with GwE on a supportive Framework of advice and guidance for schools. For ease of use and access, the Framework has been made available through a 'one-stop' dashboard.

A copy of the dashboard has been shared with Headteachers today.

The framework itself allows access to guidance and supporting materials across the following areas:

1. Health and safety;
2. Site and facilities;
3. Transport;
4. Staffing;
5. Teaching and learning;
6. Learner support;
7. Communication;
8. Other key management tasks.



A selection of the GwE exemplar models for Distance Learning, previously distributed to schools, have now been

adapted to incorporate a Blended Learning approach. These are available via the Teaching and Learning section of the framework. In addition, over the coming weeks, Core Leads and Supporting Improvement Advisors will work in close collaboration with yourselves and your identified Leaders of Learning to further hone and develop approaches to blended learning which can be delivered from September onwards. Where required, we will also facilitate peer to peer co-construction.

The Local Authority will support you with the other relevant aspects of the Framework.

The dashboard will be updated as Welsh Government release further guidance.

Thank you for your support.

Cadw Cymru'n Ddiogel.
Dal ati i Ddysgu.



Keep Wales Safe.
Keep Wales Learning.

Education Minister's message to all school staff in Wales

[Read](#) the open letter, sent on Friday, 12 June, to all school staff in Wales.

“Check in, Catch Up, Prepare for summer and September” – All schools in Wales to enter next phase

All children will have the opportunity to “Check in, Catch Up, Prepare for summer and September”, the [Education Minister Kirsty Williams announced](#) recently as she published details of the next phase for schools in Wales.

[Click here](#) to read the letter sent to all Headteachers and Governors from the Education Minister last week regarding the “Check in, Catch Up, Prepare for summer and September” phase for schools in Wales.

[Click here](#) to read the Written Statement: Publication of guidance to support educational settings increase capacity.

- [Operational Guidance](#)
- [Childcare guidance](#)
- [Guidance on learning over the summer term](#)
- [Welsh Government: FAQ Section](#)

Keep Wales Safe. Keep Wales Learning

USEFUL LINKS:

- [Stay Safe. Stay Learning' programme](#)
- [Advice for settings, schools and pupil referral units \(PRUs\) to support them in their work with learners - Developing approaches to support distance learning](#)
- [Advice for parents/carers](#)
- [Distance learning tools through Hwb](#)
- [New Advice to Support School and PRU Leaders to Continue with School Business](#)
- [Supporting your Children to use the Welsh Language at Home](#)



GwE Information and Guidance

Contacting GwE

We're here to help! We're online and available to support schools and governors.
Contact us at post@gwegogledd.cymru and we'll get back to you ASAP.



All Eyes on Wales - Online Event

THURSDAY, 9 JULY 2020 - 08:45 - 16:30

This online event will allow us to reflect on the Curriculum for Wales with a focus on Ethical, informed citizens. You will be able to access a number of sessions throughout the day that will showcase the work different organisations are doing to help support and develop young people.

Each session will have a unique access code for TEAMS live. You can sign up for as many session as you like.

Links to register through Eventbrite will follow in due course. [Click here](#) for further information.

STEM Gogledd Newsletter

[Click here](#) for the latest copy of their Newsletter.



Useful Links

Google Classroom for Teaching Assistants

- [Instructions on how to access the page using your Hwb account](#)
- [Guidance on how to use Google Classroom](#)
- [Voiceover explaining what's included in the Google Classroom](#)

Please contact WendyWilliams@gwegogledd.cymru to receive the new access code for Google Classroom for Teaching Assistants.



GwE Resources on Google Classroom

[Guidance on Google Classroom and Microsoft Teams](#)
[Further information](#)

GwE Covid-19 Updates

[GwE information & updates sent to schools](#)

Newsletters

- [Welsh Language Newsletter](#)

Welsh Government Information and Guidance

Young Person's Mental Health Toolkit

The [Young Person's Mental Health Toolkit](#) directs young people, aged 11 to 25, to a variety of online resources which can help them through the lockdown and beyond. In each of the six sections there are websites, apps, helplines, and more which support mental health and wellbeing.



Covid 19 - Welsh Government Updates

Welsh Government links regarding the coronavirus can be found below:

- Welsh Government coronavirus website: <https://gov.wales/coronavirus-covid19>
- Welsh Government guidance for educational settings: <https://gov.wales/coronavirus-covid-19-educational-settingsguidance>
- Welsh Government: Education and childcare: coronavirus: <https://gov.wales/education-coronavirus>
- COVID-19: travel guidance for the education sector: <https://gov.wales/coronavirus-travel-guidance-educationsettings-and-students-html>
- Public Health Wales advice: <https://phw.nhs.wales/topics/latest-information-on-novel-coronavirus-covid-19/>
- Follow on Twitter [@WG_Education](https://twitter.com/WG_Education) or www.facebook.com/educationwales

Dysg Newsletter

Make sure you receive Welsh Government's weekly updates and developments on education and training sectors in Wales. Sign up to Dysg [here](#)

Information and Guidance from Others

Estyn: Cameos and ideas for continuity of school business during COVID-19

Estyn have been listening to ways schools and PRUs have responded to the current crises to keep school business going. Read their examples [here](#).

Translation Competition for Yr. 10-13 Pupils

[Click here](#) for further information regarding the translation competition for yr.10-13 pupils.

Information from 'Children in Wales'

Call out for Best Practice and Innovative Ideas:

What methods are schools using to support children during COVID-19

Children in Wales are asking for schools to put forward innovative ways they are adapting to ensure pupils from low income and disadvantaged families are getting help and support during Covid-19. Schools have already evidenced their commitment and compassion towards learners' needs and much is already being done.

You can access the call out [here](#).

New Resource: The Price of Pupil Poverty Mini Guide now available

As part of the support for schools and children during COVID-19, Children in Wales have released a mini guide to support The Price of Pupil Poverty guides for Schools in Wales.

The mini guide is relevant to the current situation and is essentially a reminder for schools in how they can continue to help pupils from low income and disadvantaged families during Covid -19 in line with the main price of pupil poverty guides released by Welsh Government. You can access the mini guides [here](#).

Welsh in a Year Sabbatical Course



[Click here](#) for further information regarding the Welsh in a Year Sabbatical Course and to apply.

Intermediate Level Welsh Language Sabbatical Course

[Click here](#) for more information on the Intermediate Level Welsh Language Sabbatical Course and to apply.

Please note that the date of the course has changed.



Professional Learning - Welsh Language

Thinking about developing your Welsh language skills? [Click here](#) to take a look at the possibilities.

North Wales Online Reading Project – Keeping Pupils Reading!

HEADSPROUT

There are now **FREE** 90 day Headsprout licences giving access to online reading tuition, supported by a **FREE** comprehensive online training package from Bangor University.

[Click here](#) for further information.

If you would like to join the project, or if you have any questions, please e-mail sarah.e.roberts@bangor.ac.uk

Useful Links

[Estyn](#)

[Cameos and ideas from schools and PRUs on continuing with school business](#)

[Primary Science Teaching Trust Support](#)

[Covid-19: 24/7 Parenting](#)
[Evidence-informed guides for parents](#)

[Service Children](#)
[Funding guidance for schools in Wales](#)

[Cysgliad](#)
[Software that helps with Welsh language spellchecking and grammar checking](#)

[The National Library of Wales](#)
[Teen Blog](#)

[BookTrust Cymru](#)
[Home Time Digital Tour](#)

[NSPCC and Department for Education Campaign](#)
[Toolkit for the helpline](#)

[Xplore! Science Discovery Centre, Wrexham](#)
Website: www.xplorescience.co.uk
Social Media Channels:
www.facebook.com/XploreScience
www.twitter.com/xplorescienceuk
www.xploresciencecentre.blogspot.com
E-mail: projects@xplorescience.co.uk

post@gwegogledd.cymru

