



GwE Bulletin



#Diolch

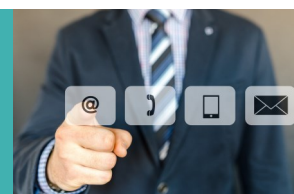


Please share our Bulletin with the whole staff team in your school and encourage all your colleagues to subscribe to our [mailing list](#).

Contacting GwE

We're here to help! We're online and available to support schools and governors.

Contact us at post@gwegogledl.cymru and we'll get back to you ASAP.



Opportunities with GwE

GwE Resources Manager

The successful applicant will lead the work of ensuring that GwE has appropriate procedures and systems to achieve effective financial management. The Resources Manager will be responsible for resource planning and management, implementing change and managing activities. The role also includes ensuring that all financial and procurement regulations are adhered to and agreed business processes are followed to ensure meaningful management information is reported within GwE.

The role will also advise the Senior Leadership Team on issues relating to finance, property, staff, health and safety, and providing a link with Human Resources.

The ability to communicate fluently in Welsh is essential for this post.

CLOSING DATE: 10.00AM, THURSDAY, 14 OCTOBER 2021

For an informal discussion about the post, please contact Arwyn Thomas, GwE Managing Director on 03005008087 or e-mail ArwynThomas@GwEGogledd.Cymru

For further details and an application form please go to www.gwynedd.gov.uk or contact 01286 679076.



GwE Professional Offer

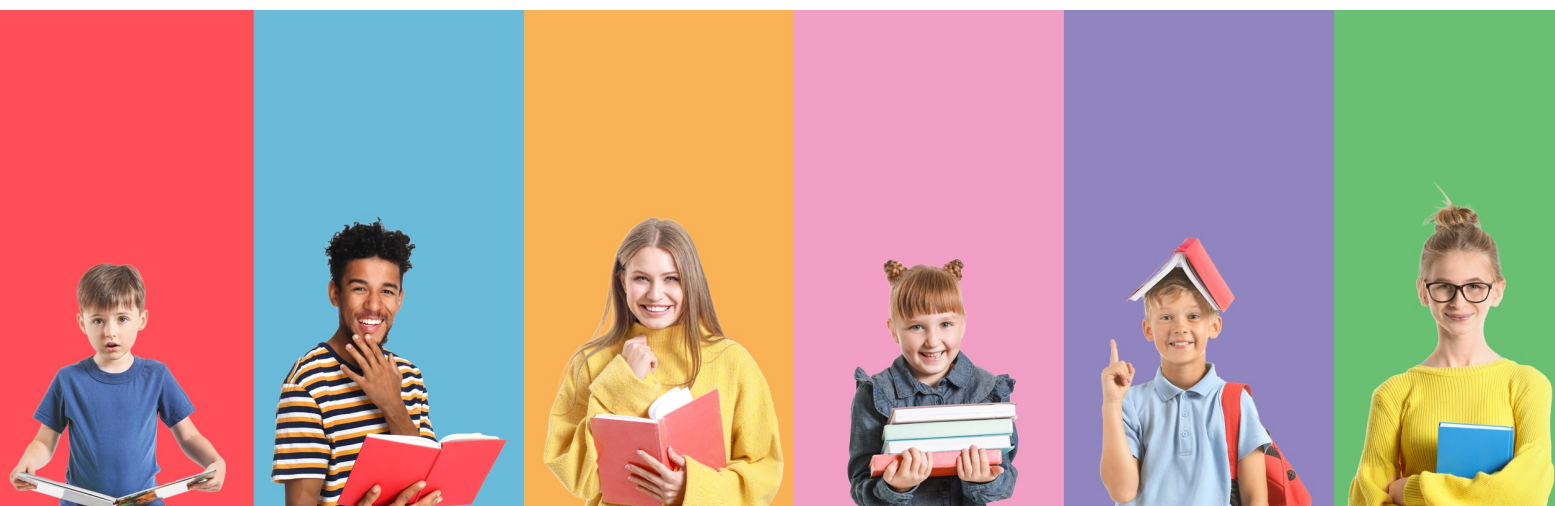
GwE Professional Offer on G6

The GwE Offer on G6 contains all the details of the professional development training that GwE offers for the school year.

To register to attend the training listed, all school staff will need to create a personal account on G6. This can be done by following [this link](#) and clicking on the 'Register Now' button. Please see the manuals [here](#).

Please ensure that any bookings are made on G6 at least 48 hours prior to the start date.

06/10/2021-21/03/2022	DATE	MEDIUM
Feedback (Shirley Clarke)	12/10/2021	English
Trauma and Mental Health-Informed Schools - 2 Day Senior Leads Training	13/10/2021	English
MFL Network Meeting - SECONDARY SECTOR	14/10/2021	Bilingual
The Price of Pupil Poverty – Children in Wales	14/10/2021	English
Foundation level in Drawing and Talking Therapy Training	20/10/2021	English
Trauma and Mental Health-Informed Schools - 2 Day Senior Leads Training	01/11/2021	English
Trauma Informed Practice Training for Early Years Practitioners	03/11/2021	English
NQT Session 3 - NQT and Pupil Well-Being	08/11/2021	Welsh
NQT Session 3 - NQT and Pupil Well-Being	11/11/2021	English
PACE and Relational Skills Training For Schools and Organisations	12/11/2021	English
NQT - Session 4 - Behaviour Management in your Classroom	24/11/2021	Welsh
NQT - Session 4 - Behaviour Management in your Classroom	25/11/2021	English
Observational Checklist	26/11/2021	English
Relational Based Play	03/12/2021	English
NQT Session 5 – Curriculum for Wales - Advancing Pedagogy	07/12/2021	English
Trauma Informed Schools	08/12/2021	English
NQT Session 5 – Curriculum for Wales - Advancing Pedagogy	10/12/2021	Welsh
The Role of the Key Adult	10/12/2021	English
NQT Session 6 – Formative Assessment and the Shirley Clarke Programme	12/01/2022	Welsh
Introduction to Protective Behaviours to support well-being	14/01/2022	English
NQT Session 6 – Formative Assessment and the Shirley Clarke Programme	14/01/2022	English
PACE and Relational Skills Training For Schools and Organisations	26/01/2022	English
Trauma Informed Schools	16/02/2022	English
Biophilia training - 'Better Out Than In', Dr Coral Harper	09/03/2022	English
Trauma Informed Practice Training for Early Years Practitioners	16/03/2022	English



National Programmes

National Leadership Development Programmes

We are pleased to share the dates with you for the next cohorts of the national Leadership Development Programmes:

MIDDLE LEADERSHIP DEVELOPMENT PROGRAMME

Link to website: <https://tinyurl.com/wsehpse8> Enquiries: RhDAG@gwegogledd.cymru

Applications open	14/09/21
Deadline for applications	by 1pm on 07/10/21
Introductory session for successful applicants	w/c 29/11/21
Programme starts	January 2022
Programme ends	December 2022

SENIOR LEADERS DEVELOPMENT PROGRAMME

Link to website: <https://tinyurl.com/7d3muzjd> Enquiries: RhDUA@gwegogledd.cymru

Applications open	21/09/21
Deadline for applications	by 1pm on 14/10/21
Introductory session for successful applicants	w/c 29/11/21
Programme starts	January 2022
Programme ends	December 2022

ASPIRING HEADTEACHERS DEVELOPMENT PROGRAMME – PREPARING FOR NPQH

Link to website: <https://tinyurl.com/5d5x7shb> Enquiries: CPCP@gwegogledd.cymru

Programme launch	01/07/21
Briefing sessions for prospective applicants	13/09/21 & 14/09/21
Deadline for applications	by 1pm on 22/10/21
Programme starts	January 2022
Applications for NPQH Assessment	November 2022
NPQH Assessment Centre	February 2023

NQT Professional Learning Dates 2021-22

Click [here](#) for dates and information about how to access the **national** briefing sessions for Newly Qualified Teachers (NQTs), NQT Induction Mentors and NQT External Verifiers 2021-22 sessions.

In particular, please see information [here](#) about the National Professional Learning Programme to support NQT Induction Mentors.

The **regional** training sessions for Newly Qualified Teachers are now live on G6. Please see more details and dates [here](#) and on G6.



Aspiring HLTA Development Programme

Cylch 4 of the Aspiring HLTA Development Programme starts in September 2021.

The closing date for applications is **12 November 2021**.

Click [here](#) for more information about the Programme and the application process.

For more details, watch this [video](#).



An exciting opportunity for new Teaching Assistants!

The **Induction Programme for New Teaching Assistants** is for individuals newly appointed to their role. This national programme will be delivered on a digital platform. Training can be completed at a time convenient to the teaching assistants and their setting. For more information and details of how to register, [click here](#).

GwE News and Information

Schools Partnership Programme 2021-2022 - INVITATION FOR DECLARATIONS OF INTEREST

So far, 72 schools across the region have benefited from this training, which develops an evidence-based approach to peer review, improvement and collaboration. We are now inviting [Declarations of interest](#) from other clusters of primary schools/ PRUs and Secondary Alliances.

[Click here](#) for further details regarding the Programme and how to declare an interest. We politely request that one Headteacher from the cluster /alliance completes the Declaration, to be returned by 08/10/21 .

Regional Grants Planning Dashboard 2021/22

To access your dashboard, please follow the [attached guidance](#).

The dashboard includes the 3 main regional grants:

- Education Improvement Grant
- Pupil Development Grant
- Professional Learning Grant

If you experience any problems, please do not hesitate to contact your Supporting Improvement Adviser or e-mail grants@GwEGogledd.Cymru .

Additional Learning Needs Implementation Update

As set out in the [Minister's statement](#) on 14 July, following engagement with stakeholders, the arrangements for implementing the Additional Learning Needs and Educational Tribunal Act have been updated.

Further information on what this means has been set out in the following link:

[Additional Learning Needs Implementation Update](#)

Twilight sessions with Shirley Clarke

We are delighted to welcome Shirley Clarke back to north Wales to update us and assist us in our work in developing and evolving formative assessment in our schools as part of our preparations for Curriculum for Wales.

📅 **12/10/2021** 🕒 3:45 - 5:15 - 'Feedback'

Please book your place by registering on G6



2021 Baseline Assessment

The Education Minister announced before the summer that, this year, primary schools will need to undertake the baseline assessment with Reception class pupils within the first 6 weeks of the Autumn Term (see statement [here](#)).

A [presentation](#) by GwE's Foundation Phase team, which offers guidance on how to assess pupils against the compact profile, is available within the 'Foundation Phase' page on GwE's Support Centre.

Please seek advice from: AnnaHughes@gwegogledd.cymru / GwawrEleriThomas@gwegogledd.cymru / JoanneDavies@gwegogledd.cymru

Although schools are not required to carry out the baseline assessment with Nursery pupils, GwE considers this to be good practice for identifying a child's baseline on entry to school.

GwE's Digital Resilience Podcasts

The Digital Resilience Podcasts cover topics related to digital safety and wellbeing and give you the opportunity to learn more about the topics under discussion in an easy and accessible way. Chapters 1 "Misinformation" and Chapter 2 "Staying true to yourself online" are now available. Search for 'Digital Resilience' on your usual podcast platforms or [click here](#).



Global Futures GwE: International Languages

GwE Support Centre - International Languages Primary and Secondary: information, guidance, opportunities and resources.

English: <http://cefnogaeth.gwegogledd.cymru/adnoddau-gwe/pynciau-allgraid-adnoddau-gwe/?lang=en>

Cymraeg: <http://cefnogaeth.gwegogledd.cymru/adnoddau-gwe/pynciau-allgraid-adnoddau-gwe/>

GLOBAL FUTURES GWE NEWSLETTER:

SECONDARY: [English](#) | [Cymraeg](#) PRIMARY: [English](#) | [Cymraeg](#)

TRAINING OPPORTUNITIES FOR PRIMARY SCHOOL TEACHERS

Funding opportunity for International Languages

We are looking for primary schools aiming to develop their International Languages provision in preparation for the Curriculum for Wales. We are offering the opportunity for a number of schools to **get a subscription to the Power Language Schools resources**. If you are interested and would like to apply for the subscription for one year, contact stephanieelliswilliams@gwegogledd.cymru

The Anthea Bell Prize for Young Translators Competition

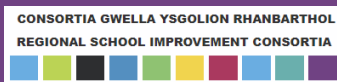
A new translation competition is launching in Autumn 2021 for students aged 11-18 in Wales. The competition will run from French into Welsh for the first time in 2021-2022. For more information regarding the competition tasks and teaching resources for the Welsh and English strands [click on the link provided here](#).

MFL SECONDARY SECTOR NETWORK MEETING

14 October 2021: 3.45- 4.45 pm - Registration on G6



Regional School Improvement Consortia News and Information



Post-16 Leadership Development Programme 2021-2022

Our Post – 16 Leadership Development Programme offers the opportunity to develop the knowledge and skills to face the challenges of post-16 leadership. For further details and to register [click here](#).



Welsh Government Information and Guidance

SECONDMENT ADVERT: Professional Adviser: Curriculum and Assessment (x2)

The purpose of the two roles is to provide expert and professional advice to the Curriculum and Assessment Division, as teaching practitioners, in the development and implementation of Welsh Government policy.

[Click here](#) for further details. **CLOSING DATE: 10/10/2021 AT 23:55**



National Strategy for Educational Research and Enquiry

SEMINAR SERIES 2021-2022

The NSERE seminar series for 2021-2022 will be closely related to priorities within the Welsh Government's Programme for Government. We hope that practitioners, policymakers and researchers can join us for these sessions. They will be held 3-4.30pm on [these](#) dates.



New Masters in Education Programme

[Click here](#) for the latest information on the new Masters in Education programme starting in September 2021.

Teacher Recruitment Campaign

The Welsh Government is running a campaign to promote teaching as a career to teaching assistants, career changers, graduates, students and stay at home parents. Please see www.educators.wales for further information. If you have an inspirational story of how you came in to teaching which you think might be worth sharing through the website then please contact

tamasinecroston@gwegogledd.cymru or ceriwilliams3@gwegogledd.cymru

Information and Guidance from Others

The Physics Mentoring Project is currently recruiting schools to take part in Cycle 5

The Physics Mentoring Project places trained students from Welsh universities into schools across Wales to mentor students in year 9-11 in Physics.

Evaluation reports have shown that participation in Physics Mentoring leads to an increase in the number of school students intending to take Physics A-level and go into STEM-related careers, including for girls, who have been historically excluded from Physics. In fact, the project leads to an improvement in all participants' impressions of physics, regardless of whether they go on to choose the subject.

If you are interested in running the project in your school, please contact physicsmentoring@cardiff.ac.uk. Places are limited and will be assigned to schools in collaboration with Secondary Science Leads at your consortia.

Further information available [here](#).



Pori Drwy Stori 2021 Nursery Programme

PORI DRWY STORI NURSERY 2021 REGISTRATIONS ARE OPEN!

[Click here](#) to register to receive two free sets of bilingual resources for every nursery-aged child in your school/ setting:

The programme is designed for children aged 3-4 in the two terms before they enter Reception. It focuses on supporting oracy skills, supporting parents / carers to be active partners in their children's learning and supporting schools to develop positive home-school links.

There are a limited number of spaces available. You must register yearly for this programme.

CLOSING DATE: 11 OCTOBER 2021



The Welsh Collaborative for Learning Design (WCLD) Learning Lab



#learningdesignwales



Gŵyl Dydwethredol Cymru ar gyfer Dylunio Dysgu
Wales Collaborative for Learning Design

The Welsh Collaborative for Learning Design (WCLD) are hosting the first learning lab for teachers in Wales. Come along to discuss the lessons we have learnt from the pandemic and how it can inform our future practice.

Register: shorturl.at/fpAB6



Join us for the first of a series of WCLD Welsh Government Funded **LEARNING LABS**
#1: Lessons from the Pandemic for Learning Design
Synchronous and Asynchronous Online Learning
Cardiff Metropolitan University
School of Education & Social Policy
Online via MS Teams
Tuesday 2nd November 2021
1630h-1730h
For further info email: ladams@cardiffmet.ac.uk
or register [here](https://shorturl.at/fpAB6) and receive a WCLD Learning Lab info and guidance pack
Open to all school class teachers

MA Education Studies (part-time) - Bangor University

Below are the modules being delivered during the five MA weekends in this academic year:

SATURDAY MODULES - Behaviour Management, Meeting ALN, Dyslexia Theory, Mental Health, Teaching in the Early Years, Educational Leadership.

SUNDAY MODULES - *Dwyieithrwydd mewn Addysg*, Research Methods in Education, Teaching Dyslexic Learners, Counselling in Education, Developing Mentoring Skills.

Please apply online via Direct Applications, here is the link to enable you to do this:

<https://www.bangor.ac.uk/courses/postgraduate-taught/education-studies-part-time-ma>

The closing date for applications is **WEDNESDAY, 6 OCTOBER 2021**.

Y Cliciatur / Clic-It

The latest version of the bilingual e-Newspaper Y Cliciatur/Clic-It is available on the Hwb website: [Cliciatur](#) | [Clic-It](#)



Byd Addysg
In Education



An Opportunity to be Involved: Whole School Equity Project (Wales)

Through a series of free, online CPD sessions in the autumn and spring terms 2021/2022 for primary and secondary school teachers, the WSE (Wales) project will help teachers to identify the barriers that may be limiting their pupils' aspirations and will show how these barriers can be addressed in the classroom and across the whole school.

All sessions will run for 90 minutes after school and there will be some work to do between sessions. It is recommended that two teachers participate from each school so that learning can be shared. Sessions will be presented in English.

Further information available [here](#).

If you are interested in participating, please email Anita Shaw: anita.shaw@iop.org

IOP Institute of Physics
Cymru | Wales

Swansea Science Festival: Incredible Innovations

Register your class to take a journey through the ages, exploring innovative and ground-breaking moments throughout the history of machines with the help of Grace Webb and her very own motorbike! You will receive an exciting resource pack to complete at school and get the chance to take part in an exclusive virtual session, with the added bonus of an optional in-person workshop.

There is a limited number of spaces for this event, so please book now to avoid disappointment. Bookings will close on 15 October

tc1.me/SwanseaScienceFestival



Technocamps Upcoming events

Further information is linked in the headings.

Education Conference

The Technocamps 2021 Education Conference is a chance to get together with other primary and secondary educators in Wales, share best practice, learn about the newest curriculum changes and find out what support is available! It is being held on Thursday 4 November at Swansea's Liberty Stadium and registration is entirely free thanks to Welsh Government funding.

Technotalks

The first series of Technocamps' employability podcast is still available via Spotify and SoundCloud! It aims to entertain and inform 11-18 year olds about the careers available to them in the Science, Technology, Engineering and Maths sectors. We chat to inspiring people in STEM careers to discuss what their job involves, their career path and the exciting new technology in their field.

post@gwegogledd.cymru

