



GwE Bulletin

COLLABORATING · LEARNING · SUCCEEDING



Please share our Bulletin with the whole staff team in your school and encourage all your colleagues to subscribe to our [mailing list](#).



GwE wants to say

THANK YOU

to all teachers, schools and support staff

THIS NATIONAL
#THANKATEACHER DAY



OPPORTUNITIES WITH GwE

Supporting Improvement Adviser: Secondary Welsh and Literacy [to support language continuum with a particular focus on Welsh as a Second Language]



CLOSING DATE: 10:00am, THURSDAY, 26 MAY 2022

The ability to communicate fluently in Welsh is essential for this post.

For an informal discussion, please contact Elfyn Vaughan Jones, Senior Lead: Secondary [07557759240 / elfynjones@GwEGogledd.Cymru].

For further details and an application form please go to www.gwynedd.gov.uk or contact 01286 679076.

Supporting Improvement Adviser - Well-being, to lead and support the Health and Well-being Area of Learning and Experience, Curriculum for Wales



CLOSING DATE: 10:00am, FRIDAY, 27 MAY 2022

For an informal discussion, please contact Alwyn Jones, Assistant Director [0300 500 8087 / alwynjones@gwegogledd.cymru].

For further details and an application form please go to www.gwynedd.gov.uk or contact 01286 679076.



Bryn Eirias, Abergelle Road,
Colwyn Bay, LL29 8BY



0300 500 8087



GwE Support Centre



@GwEGogleddCymru



post@gwegogledd.cymru



www.gwegogledd.cymru



g6.gwegogledd.cymru



GwE Gogledd Cymru

Supporting Improvement Adviser - to support well-being and ensure equity for vulnerable pupils



CLOSING DATE: 10:00am, FRIDAY, 27 MAY 2022

For an informal discussion, please contact Alwyn Jones, Assistant Director [0300 500 8087 / alwynjones@gwegogledd.cymru].

For further details and an application form please go to www.gwynedd.gov.uk or contact 01286 679076.

GwE PROFESSIONAL OFFER

GwE Professional Offer on G6

The GwE Offer on G6 contains all the details of the professional development training that GwE offers during the school year.

To register to attend the training listed, all school staff will need to create a personal account on G6. This can be done by following [this link](#) and clicking on the 'Register Now' button. Please see the manuals [here](#).

Please ensure that any bookings are made on G6 at least 48 hours prior to the start date.

26/05/2022-22/07/2022	DATE	MEDIUM
NQT training for teachers working with learners aged 3-8 (English-medium)	26/05/2022	English
International Languages: Primary sector – Power Language training sessions	16/06/2022	English
The Positive Power of Play	27/06/2022	English
Trauma Informed Schools	12/07/2022	English
DigiLearning in action with Nina Jackson	15/07/2022	English
Person Centred Practice Licences	20/07/2022	Bilingual
"How to use discussion" with Mike Gershon	21/07/2022	English
Differentiation with Mike Gershon	21/07/2022	English

NATIONAL PROGRAMMES

Aspiring HLTA Development Programme



Cylch 5 of the Aspiring HLTA Development Programme starts in September 2022. The closing date for applications is **23 June 2022**. Click [here](#) for more information about the Programme and the application process. For more details, watch this [video](#).

GwE NEWS AND INFORMATION

Personalised Assessments 2022

[Regional Messages - Early Summer Term 2022](#)

[Click here](#) for the latest information.

[Written Statement: Numeracy \[Reasoning\] Personalised Assessments](#)

We are pleased to announce the availability of the new Numeracy (Reasoning) online personalised assessment which will help to achieve high standards and aspirations for all. This completes the suite of on-demand assessments that teachers can use throughout the year to support and inform their teaching and progression planning in reading and numeracy. Full information available [here](#).

GwE Global Futures: International Languages

For more information or support regarding any of the items below, please contact:

stephanieelliswilliams@gwegogledd.cymru

GwE Support Centre - International Languages Primary and Secondary: information, guidance, opportunities and resources

English: <http://cefnogaeth.gwegogledd.cymru/adnoddau-gwe/pynciau-allgradd-adnoddau-gwe/?lang=en>

INFORMATION FOR PRIMARY AND SECONDARY SCHOOLS

https://www.gwegogledd.cymru/itm_mfl/

APRIL/MAY NEWSLETTER

[Primary](#) | [Secondary](#)

WELSH EDUCATION CONSORTIA NEWS AND INFORMATION

Revision Strategies for More Able and Talented Learners

The Education Consortia More Able and Talented Team are pleased to provide a pre-recorded webinar supporting teachers to enhance revision strategies for their MAT learners in preparation for examinations. [Click here](#) for further information.



WELSH GOVERNMENT INFORMATION AND GUIDANCE

National Professional Learning Entitlement

The National Professional Learning Entitlement is currently being developed through co-construction with Welsh Government. For details of how you can feed into co-construction of the Entitlement, please see the link below.

[Professional Learning Entitlement Booking Form - Meetings with schools \(office.com\)](#)

INFORMATION AND GUIDANCE FROM OTHERS

Bangor University: National MA Education [Wales] Programme

FULLY FUNDED PLACES AVAILABLE FOR SEPTEMBER 2022 START ON THE NATIONAL MA EDUCATION [WALES] PROGRAMME

The School of Educational Sciences, Bangor University has fully funded places available for September 2022 start :

- National MA Education (Wales),
- National MA Education (Wales) Leadership
- National MA Education (Wales) Additional Learning Needs

For more information regarding programme content, entry requirements and possible financial incentives, please visit our website at [National Education \(Wales\)](#) | [Bangor University](#) or contact, Dr Tanya Hathaway t.hathaway@bangor.ac.uk

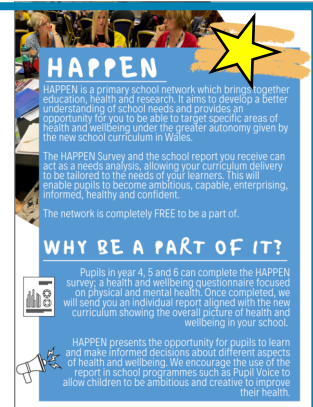
The HAPPEN Health and Well-being Survey for Primary Schools

Researchers at Swansea University are inviting GwE primary schools to participate in their bilingual HAPPEN survey. The survey is designed to help schools evaluate pupils' health and well-being and supports an evidence-informed approach to this important area of provision.

Sign up to HAPPEN and receive step-by-step instructions on how to run the HAPPEN survey in your school at:

<https://happen-wales.co.uk/register-to-take-part/>

For a list of FAQs and to find out more information, please visit: <https://happen-wales.co.uk/faqs/>



Books Council of Wales' BookSlam Reading Challenge 2021-2022



This year's county rounds of the BookSlam competition were held this week. We had several fantastic discussions about a wide variety of books, with wonderful readers from schools all over north Wales engaging in mature and insightful book talk.

Teams from St Elfod, Sychdyn and Acrefair schools have made it through to the national round in Aberystwyth in June.

Let's Go Zero 2030

JOIN THE SCHOOLS FIGHTING CLIMATE CHANGE

Further information available [here](https://www.letsgozero.org). Sign up your school at www.letsgozero.org



Lead Creative Schools Scheme Briefing Sessions for School Leaders

The Arts Council of Wales and Welsh Government are pleased to announce a new round of the ground-breaking Lead Creative Schools.

Details on briefings and how to apply to take part are available through this link - <https://arts.wales/news-jobs-opportunities/lead-creative-schools-scheme-briefing-sessions-for-school-leaders-0>

Application closes: 17:00 on 31/05/2022

MA Education [Wales]

WREXHAM GLYNDŴR UNIVERSITY

Wrexham Glyndŵr University has 50 fully funded places for this exciting programme of study. For more details on the funded opportunities, please [click here](#) or contact Kelly Smith, Programme Leader [K.Smith2@glyndwr.ac.uk]

E-sgol Conference 2022 - Inspire, Motivate, Engage

This conference is being held on 07/07/22.

For more information and how to register please click [here](#).

National Thank a Teacher Day

The National Thank a Teacher Day will be held on 26/05/22.

For more information please click [here](#).