



GwE Bulletin

COLLABORATING

LEARNING

SUCCEEDING



Please share our Bulletin with the whole staff team in your school and encourage all your colleagues to subscribe to our [mailing list](#).

GwE PROFESSIONAL OFFER

GwE Professional Offer on G6

The GwE Offer on G6 contains all the details of the professional development training that GwE offers during the school year.

To register to attend the training listed, all school staff will need to create a personal account on G6. This can be done by following [this link](#) and clicking on the 'Register Now' button. Please see the manuals [here](#).

Please ensure that any bookings are made on G6 at least 48 hours prior to the start date.

21/06/2022-18/11/2022	DATE	MEDIUM
NQT KS2 & Secondary: Digital Competency for NQTs (English-medium)	30/06/2022	English
Foundation Phase Network Summer term (Welsh-medium) - revised date	05/07/2022	Welsh
Foundation Phase Network Summer term (English-medium) - revised date	07/07/2022	English
Trauma Informed Schools	12/07/2022	English
Foundation level in Drawing and Talking Therapy Training	29/09/2022	English
Biophilia training - 'Better Out Than In', Dr Coral Harper	18/11/2022	English

Digital Competency for NQTs (KS2 and Secondary - English-medium)

30 June: will be held on Teams 9:00—11:00

Provider: Kellie Goodall, Ysgol Caer Nant / Brookfield School

Please register through G6



Bryn Eirias, Abergelle Road,
Colwyn Bay, LL29 8BY



0300 500 8087



GwE Support Centre



@GwEGogleddCymru



post@gwegogledd.cymru



www.gwegogledd.cymru



g6.gwegogledd.cymru



GwE Gogledd Cymru

NATIONAL PROGRAMMES

Aspiring HLTA Development Programme

Cylch 5 of the Aspiring HLTA Development Programme starts in September 2022. The closing date for applications is **23 June 2022**. Click [here](#) for more information about the Programme and the application process. For more details, watch this [video](#).

National Leadership Development Programmes

We are pleased to share the dates for the next cohorts of the National Leadership Development Programmes.



Please note, in particular, the launch on **20/06/2022** of the **Aspiring Headteachers Development Programme – preparing for NPQH**. This will provide the opportunity for prospective applicants to start on their preparation work. [Click here](#) for more information about the application process. Prospective applicants are strongly advised to view the video of the briefing session before applying. After watching the video, prospective applicants and/or their headteacher / line manager will have the opportunity to attend a question and answer session early in the autumn term.

Middle Leadership Development Programme [MLDP - GwE \(gwegogledd.cymru\)](#)

Applications open	13/09/22
Deadline for applications	By 1pm on 06/10/22
Introductory session for successful applicants	w/c 28/11/22
Programme starts	January 2023
Programme ends	December 2023

Senior Leaders Development Programme [SLDP - GwE \(gwegogledd.cymru\)](#)

Applications open	20/09/22
Deadline for applications	by 1pm on 13/10/22
Introductory session for successful applicants	w/c 28/11/22
Programme starts	January 2023
Programme ends	December 2023

Aspiring Headteachers Development Programme - Preparing for NPQH

Programme launch	20/06/22
Question and Answer sessions for prospective applicants and /or their headteacher / line manager	September 2022
Deadline for applications	by 1pm on 27/10/22
Programme starts	January 2023
Applications for NPQH Assessment	November 2023
NPQH Assessment Centre	February 2024

GwE NEWS AND INFORMATION

Y Gymraeg

Siarter Iaith questionnaires

The links for the 2022 Summer Term questionnaires are now live on Hwb. You can complete the questionnaire for comparison with the results from the beginning of the year. [Click here for the overview and links.](#)

GwE Global Futures: International Languages

For more information or support regarding any of the items below, please contact:

stephanieelliswilliams@gwegogledd.cymru

GwE Support Centre - International Languages Primary and Secondary: information, guidance, opportunities and resources

English: <http://cefnogaeth.gwegogledd.cymru/adnoddau-gwe/pynciau-allgradd-adnoddau-gwe/?lang=en>

JUNE/JULY NEWSLETTER

[Primary](#) | [Secondary](#)



Free Online webinar

Free online webinar for primary school teachers interested in registering for a CPD module for 2022-2023 on **Teachers Learning to Teach Languages in primary schools (TELT)**

For more information click [here](#).



Foundation Phase Network Meeting

English: 7 July (3:45 - 4:45pm)

Welsh: 5 July (3:45 - 4:45pm)

Focus:

- Autumn Term 2022 'On-Entry Assessment'
- Incorporating elements of the Curriculum for Wales framework within woodwork experiences

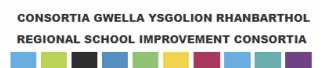
A link to the meeting will be e-mailed to participants during the last week in June



WELSH EDUCATION CONSORTIA NEWS AND INFORMATION

Revision Strategies for More Able and Talented Learners

The Education Consortia More Able and Talented Team are pleased to provide a pre-recorded webinar supporting teachers to enhance revision strategies for their MAT learners in preparation for examinations. [Click here](#) for further information.



WELSH GOVERNMENT INFORMATION AND GUIDANCE

National Professional Learning Entitlement

The National Professional Learning Entitlement is currently being developed through co-construction with Welsh Government. For details of how you can feed into co-construction of the Entitlement, please see the link below.

[Professional Learning Entitlement Booking Form - Meetings with schools \(office.com\)](#)

Personalised Assessments - Important Update

Please click [here](#) for an update about Personalised Assessments from Welsh Government.



Teaching Wales Update

The television advert is now live on S4C and Sky Adsmart, and so are adverts on the radio and in train stations, and digital ads on lleol.cymru, nation.cymru, and Golwg 360.

The TV advert can be found here - [Teaching Wales – Television advert - YouTube](#)



Supporting transition from the current arrangements to Curriculum for Wales

The purpose of this update is to provide additional information to help schools and settings prepare for Curriculum for Wales roll-out from September 2022.

<https://hwb.gov.wales/curriculum-for-wales/assessment-arrangements/supporting-transition-from-the-current-arrangements-to-curriculum-for-wales/>



INFORMATION AND GUIDANCE FROM OTHERS

MA Education [Wales]

WREXHAM GLYNDŴR UNIVERSITY

Wrexham Glyndŵr University has 50 fully funded places for this exciting programme of study. For more details on the funded opportunities, please [click here](#) or contact Kelly Smith, Programme Leader [K.Smith2@glyndwr.ac.uk]

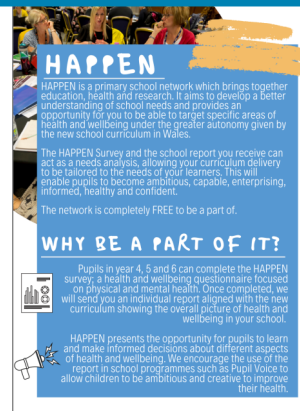
The HAPPEN Health and Well-being Survey for Primary Schools

Researchers at Swansea University are inviting GwE primary schools to participate in their bilingual HAPPEN survey. The survey is designed to help schools evaluate pupils' health and well-being and supports an evidence-informed approach to this important area of provision.

Sign up to HAPPEN and receive step-by-step instructions on how to run the HAPPEN survey in your school at:

<https://happen-wales.co.uk/register-to-take-part/>

For a list of FAQs and to find out more information, please visit: <https://happen-wales.co.uk/faqs/>



Primary Science Newsletter



Click [here](#) for a copy of the newsletter.

Technology in Maths Survey



Have your say on how technology is used in maths education in Wales.

For more information click [here](#).

Let's Go Zero Schools Competition

The [Let's Go Zero competition with IKEA](#) has launched, and is open for applications from schools until Thursday, 30 June 2022. Full information available [here](#).



E-sgol Conference 2022 - Inspire, Motivate, Engage

This conference is being held on 07/07/22.

For more information and how to register please click [here](#).

Bangor University: National MA Education [Wales] Programme

FULLY FUNDED PLACES AVAILABLE FOR SEPTEMBER 2022 START ON THE NATIONAL MA EDUCATION [WALES] PROGRAMME

The School of Educational Sciences, Bangor University has fully funded places available for September 2022 start :

- National MA Education (Wales),
- National MA Education (Wales) Leadership
- National MA Education (Wales) Additional Learning Needs

For more information regarding programme content, entry requirements and possible financial incentives, please visit our website at [National Education \(Wales\) | Bangor University](#) or contact, Dr Tanya Hathaway t.hathaway@bangor.ac.uk