



GwE Bulletin

COLLABORATING · LEARNING · SUCCEEDING

📢 Please share our Bulletin with the whole staff team in your school and encourage all your colleagues to subscribe to our [mailing list](#). 📢

PontioX2 GwE



17/03/2023



8:45-13:30



Venue Cymru

[Please see here](#) information regarding the GwE Transition Workshop.

To register, please complete [THIS FORM](#) by 10/03/2023.



#PontioGwE2023

GwE PROFESSIONAL OFFER

GwE Professional Learning Offer

[Click here](#) to view the offer.

Please register via G6.



📧 Professional Learning Offer – Digital Learning

NATIONAL PROGRAMMES

Experienced Headteachers Development Programme (EHDP)



The Cross-regional Leadership Group has decided to provide the **Experienced Headteacher Development Programme** to a new cohort this academic year. This will include the completion of a 360 Review and attendance at two separate two-day residentials, during the summer term.

[Further details can be found here.](#)

To express an interest and/or to discuss further, please e-mail Bryn Jones on RhDPP@gwegogledd.cymru by **07/03/2023**.



Bryn Eirias, Abergele Road,
Colwyn Bay, LL29 8BY



post@gwegogledd.cymru



0300 500 8087



www.gwegogledd.cymru



GwE Support Centre



g6.gwegogledd.cymru



@GwEGogleddCymru



GwE Gogledd Cymru

GwE Regional NQT PL in North Wales (Term 2 and 3)

NOTE THE VENUE & DATE CHANGES

A Regional Programme will be delivered over the next two terms, with sessions starting in **March 2023**.

Full details available [here](#). **REGISTER VIA G6.**

You will need to sign up to the GwE G6 platform to access the regional training [**NOT the national Teams space**]. Details may be found [here](#).

National HLTA Development Day



09/03/2023



09:15 - 15:15



Venue Cymru, Llandudno

A National HLTA Development Day will be held on 09/03/2023 for teaching assistants holding HLTA status. This is an opportunity to see examples of effective practice in schools across the GwE region.

Key note speaker: Nina Jackson, International Education Consultant.

REGISTER VIA G6

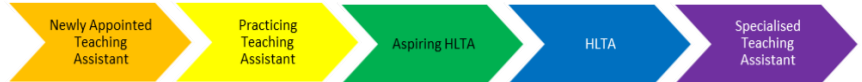


Teaching Assistants Learning Pathway

'PRACTISING TEACHING ASSISTANT' - a national training programme for teaching assistants with more than two years of experience. *Costs will be reimbursed.*

For further information, [click here](#).

REGISTER VIA G6



An exciting opportunity for new Teaching Assistants!

The **Induction Programme for New Teaching Assistants** is for individuals newly appointed to their role. This national programme will be delivered on a digital platform. Training can be completed at a time convenient to the teaching assistants and their setting. For more information and details of how to register, [click here](#).

Google Classroom for Teaching Assistants

A bank of resources for the professional development of TAs, including topics such as: Using your Professional Learning Passport; Professional Standards for Assisting Teaching; HLTA Status; Curriculum for Wales; Hwb resources; Learning Welsh.

The code for joining the page is **ghlyepw**, using your Hwb e-mail address. Follow this link for instructions on how to access the page : <https://cutt.ly/Google-Classroom-Instructions-for-TAs>

[Click here](#) for guidance on how to use Google Classroom and here for a [link](#) to a voiceover explaining what's included in the Google Classroom.



GwE NEWS AND INFORMATION


'Workplace Literacy' Project 2023



One of the aims of 'Cymraeg 2050: A million Welsh speakers' (Welsh Government) is to 'increase the use of Welsh within the workplace across all sectors'. The aim of this project is to strengthen the existing links between secondary schools and local businesses, focusing on their use of Welsh and how they promote the advantages of bilingual skills in business in Wales.

To join this project, complete [this form](#) by 10/03/2023, or to learn more about how your school could benefit from joining the above project, [contact us](#). [Full details available here](#).

Drawing and Talking

 01/03/2023 OR 09/03/2023  ONLINE EVENT




A safe, easy to learn method of working with children, teenagers and young adults, to help underlying emotional difficulties that may be affecting their learning and behaviour. The course will run through the medium of English. **REGISTER VIA G6**

The Power of Positive Play

 06/03/2023  Plas Menai, Caernarfon  13/03/2023  Beaufort Park Hotel, Mold

A full day training for education staff from all settings and working with all ages and abilities. The training focuses on setting up a LEGO® Based Therapy group for pupils with all kinds of social and communication needs. The course will run through the medium of English. **REGISTER VIA G6**

GwE Post-16 Leadership Conference

 03/03/2023  Conwy Business Centre  Details in the [programme](#).

New Research with GwE Schools Published

The UK stand together trial: protocol for a multicentre cluster randomised controlled trial to evaluate the effectiveness and cost-effectiveness of KiVa to reduce bullying in primary schools

GwE schools have been working with researchers from 4 UK universities to evaluate the effectiveness and cost-effectiveness of the KiVa anti-bullying programme in reducing child reported bullying in primary schools. This is part of GwE's ongoing work with our research partners at CIEREI, Bangor University to promote the use of more evidence-based approaches in schools. More information on the trial can be found [here](#).

Literacy and Numeracy Personalised Assessments

Regional Messages Spring 2023

[Click here](#) for the latest regional messages regarding the Spring 2023 personalised assessments.



GwE Reading Projects

GwE has been working with researchers at the CIERI, Bangor University to provide support for effective reading instruction in English & Welsh. Please see the structure of this support in a [policy overview for schools](#). Schools are invited to join training for three of these projects:

[Free training and resources for *Books Together* Book Sharing Programme](#)
[Click here for more information.](#)

[Free training for schools to deliver KS2 literacy programme for struggling readers](#)
[Click here for more information.](#)

[Looking to improve learners' reading fluency skills in English and/or Welsh?](#)
[Click here for more information.](#)

Resources for Parents and Guardians

[Help Your Child To Learn – PRIMARY / YEARS 7 & 8](#)

A comprehensive course for parents of 5 - 12-year-olds, giving you everything you need to support your child's learning and to help them grow and develop.

RESOURCES: [ENGLISH](#) | [CYMRAEG](#)



[Help Your Teen To Learn - YEARS 9, 10 & 11](#)

A comprehensive course for parents of 13 - 16-year-olds, giving you everything you need to support your teen's learning and to help them revise and prepare for exams.

RESOURCES: [ENGLISH](#) | [CYMRAEG](#)



PLEASE ASK YOUR SCHOOL SIA FOR A VOUCHER CODE.

Well-being

[Education Support](#)

Do you want to feel reinvigorated, energised and develop in your role?

[Click here](#) to view the fully funded well-being support for school leaders provided by Education Support.

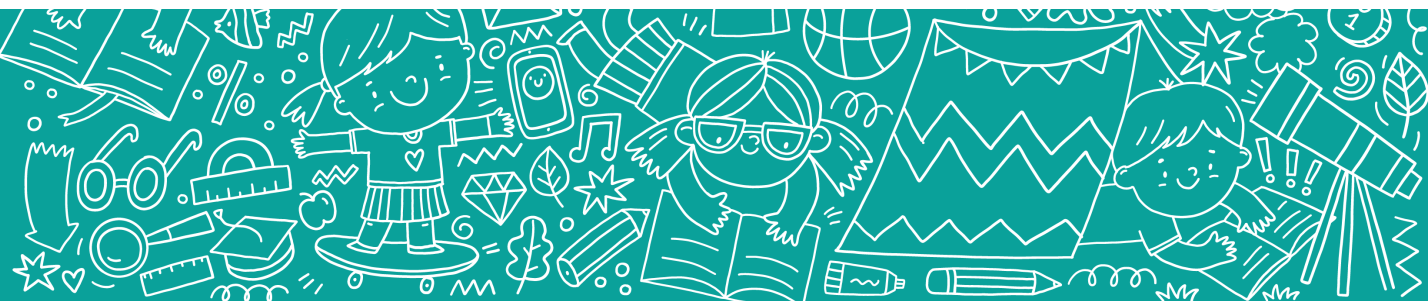
[Diploma in Trauma and Mental Health-Informed Schools and Communities](#)

PRACTITIONER STATUS

GwE 13:  **April 2023**  **TBC**  [Further information](#)

GwE 14:  **June 2023**  **TBC**  [Further information](#)

Please contact lindsay@traumainformedschools.co.uk / alys@traumainformedschools.co.uk



GwE Global Futures: International Languages

GwE Support Centre - International Languages Primary and Secondary: information, guidance, opportunities and resources: <http://cefnogaeth.gwegogledd.cymru/adnoddau-gwe/pynciau-allgradd-adnoddau-gwe/?lang=en>

Newsletters

English: [Primary](#) | [Secondary](#) Cymraeg: [Cynradd](#) | [Uwchradd](#)

INTERNATIONAL LANGUAGES NETWORK MEETINGS – PRIMARY SECTOR

Opportunity to share ideas, get a little help and training, answer questions and advice, look at the resources that can be used from Power Language. **REGISTER VIA G6.**

Gwynedd / Anglesey 03/03/2023 9:00-12:00 Neuadd Reichel, Bangor University, LL57 2TR

Conwy / Denbighshire **Due to unforeseen circumstances, this meeting has been postponed.**




Flintshire / Wrexham 08/03/2023 13:00-15:30 GwE, Linden House, Mold, CH7 1XP

PROFESSIONAL LEARNING: INTERNATIONAL LANGUAGES IN THE PRIMARY SECTOR

 **21/03/2023**  **9:00-15:30**  **Venue Cymru, Llandudno**  **Richard Tallaron, Power Language**

In collaboration between our Global Futures GwE team and our partners at Power Language, this day will aim to provide primary school teachers with practical ideas to embed languages effectively in their curriculum through History, Literacy, Science, Storytelling, Expressive Arts, Numeracy and D and T. **Information and registration [here](#) by 10/03/23.**

CARDIFF UNIVERSITY MULTILINGUALISM RESEARCH NETWORK: PRIMARY AND SECONDARY SECTORS

 **18/04/2023**  **15:30-16:30**  **Online Event - Zoom**

'An Integrated Plurilingual Approach to Language Learning (IPA): Research-based Classroom Practices' Dr Caterina Sugañes Ernest (FPCEE-Blanquerna, University Ramon Llull), Dr Maria González-Davies (FPCEE-Blanquerna, University Ramon Llull). [REGISTER HERE.](#)



WELSH EDUCATION CONSORTIA NEWS


Consortia Gwella Ysgolion Rhanbarthol
Regional School Improvement Consortia

Coaching & Mentoring Opportunity

The 4 regional education consortia have been developing a Coaching & Mentoring culture via a national training Programme for 2 years now. This virtual PL programme consists of 6 x 3½-hour sessions, held over a period of 6 weeks.

There are still some places available on the **English-medium** cohort, starting on **19/04/2023** (am or pm).

A new Welsh-medium cohort is also being organised after Easter, to start on 27/04/2023 (am).

If you'd like to express an interest in this fully-funded opportunity, please contact

anwengwilym@gwegogledd.cymru



Teaching & Learning to Support Vulnerable & Disadvantaged Learners Programme

Following the launch of the Programme with Mike Gershon on 06/02/2023, [a copy of the presentation can be downloaded here.](#) The link to the website is: www.supportingvulnerablelearners.cymru

You can access all the resources on the website by registering using your Hwb login details.



Well-being Programme Partnership: Well-being Support

[Click this link](#) to access the Consortia's latest Well-being Support Flyer.

WELSH GOVERNMENT INFORMATION

Child Poverty Strategy Refresh: Engagement Events

Tackling child poverty remains a priority for the Welsh Government.

We are refreshing the [Child poverty strategy for Wales: report | GOV.WALES 2015](#).

We're asking you to be part of an important conversation about national priorities for tackling poverty and how these can be delivered in partnership, with local government, public sector and with wider partners.

This is the first phase of engagement work, where we are asking professionals and organisations to provide their views and expertise.

[Written Statement: Publication of the Welsh Government's Child Poverty Progress Report 2022 \(13 December 2022\) | GOV.WALES](#)

TacklingPovertyAndSupportingFamilies@gov.wales

Information and Guidance from Others

Upcoming Alps Champions Webinars

[SUPPORTING YEAR 12 STUDENTS WEBINAR](#)

During this webinar, to be held on 09/03/23 at 15:30, post-16 leadership priorities will be discussed, alongside effective strategies to support year 12 students in the run up to the exams. It will also include a session on the effective use of Alps Connect to track student progress and to identify priorities. Register here:

<https://www.bigmarker.com/alps-education/Supporting-AS-students-to-make-outstanding-progress>

['MAXIMISING ACHIEVEMENT' WEBINARS FOR KS5 SCHOOLS IN WALES](#)

The above webinars have now gone on the on-demand section of the website. The link to view is below:

<https://www.bigmarker.com/alps-education/KS5-Wales-Maximising-Achievement-with-Yr-13-in-final-11-weeks>

[A NEW BLOG FOR ALPS ON DEVELOPING AN EFFECTIVE POST-16 TUTORIAL PROGRAMME](#)

The link is below:

<https://alps.education/opinion/developing-an-effective-post-16-tutorial-programme/>



Time to Talk Public Health – Invitation to Young People in Schools

Public Health Wales is inviting young people aged 16+ from across Wales to join a residents' panel called 'Time to Talk Public Health' which aims to shape public health policy in Wales. [Click here](#) for more information.

Amser i Siarad
Iechyd Cyhoeddus
Cymru

Time to Talk
Public Health
Wales

Experiential Learning for Aspiring Leaders Workshop



23/03/2023



Bangor University

Bangor University invites Year 9-11 students to participate in a day of active learning to experience being a leader and managing a team. Each school may bring a maximum of 7 pupils for each workshop.

[Further information and registration details.](#)

Primary SHRN Survey

All primary schools throughout Wales have received an invitation to take part in the Primary SHRN Health and Wellbeing Survey. This survey is open until 31/03/23, with a **deadline of 15/03/23 to express your interest in taking part.**

The survey collects data on students' demographics and outcomes relating to topics such as mental health and school transition. [You can view the survey questions, which differ for each year group, by clicking this link.](#) Schools which participate in the survey receive an individualised Student Health and Wellbeing Report based on learner responses, [an example of which you can view here.](#) The reports include supportive text with suggested whole school approaches, up-to-date research findings and links to supportive national agencies.

For further information, including the benefits of taking part, [you can view a recording of an information webinar here](#) ([with bilingual slides available here](#)) or you can contact the research team on primarySHRN@cardiff.ac.uk. If your school has already signed up or responded to the invitation e-mail no further action is needed.

National Arts and Education Network (NAEN North Wales)

The NAEN, supported by the WLGA and Arts Council of Wales, is an organisation that seeks to provide training in the expressive arts to education practitioners.

The Network has access to a range of skilled and experienced artists across Wales with a track record of delivering high quality training.

We recognise that education practitioners wish to effectively implement the expressive arts within the new curriculum, but can sometimes lack confidence in particular areas. We have put together a programme of training for 2023 to meet this demand.

[Full details available here.](#) Please contact enlli@artsed.wales if you have any questions or queries.

National Centre for Learning Welsh: Education Portal

The National Centre for Learning Welsh has launched [a new online portal](#) to showcase all that is available to help practitioners find a suitable course. The portal will be kept up-to-date with all the latest courses and resources, including a choice of online self-study courses; community-based courses in both virtual and face-to-face classrooms; and intensive courses, with opportunities available on all learning levels. The portal also offers prospective learners an opportunity to use a new digital resource called the 'Learning Wizard' to help find a course on a suitable level.

These Learn Welsh opportunities are suitable for:

- Qualified teachers in, or searching for, employment
- Newly qualified teachers
- Supply teachers
- Individuals currently training to be qualified teachers
- Teaching assistants currently in employment
- Leaders in education and
- Advisory teachers

[Click here to visit the portal.](#)



Gweithio ym myd addysg? Eisiau cryfhau eich Cymraeg?
Mae'n hawdd dod o hyd i gwrs sy'n addas i chi.

Mae dewis eang ar gael:

- Cysiau dysgu dwys, sy'n cael eu darparu trwy amryw o fodelau.
- Cysiau cymunedol mewn dosbarthiadau wyneb-y-wyneb a rithiol.
- Hunan-astudio ar-lein, gan gynnwys cysiau byr a chwrs estynedig ar gyfer dechreuwr.

Chwiliwch Gweithlu Addysg Dysgu Cymraeg am fwy o fanylion.

Do you work in education? Interested in learning Welsh?
It's easy to find a course that suits you.

You can choose from:

- Intensive learning courses, delivered via different models.
- Community-based courses, in both virtual and face-to-face classrooms.
- Online self-study, including short courses and an extended beginners' course.

Just search Education Workforce Learn Welsh to find out more.

[dysgucymraeg.cymru](#)
[learnwelsh.cymru](#)

[CYMRU](#) Dysgu Learn

MA Education (Wales)

Bangor University has a fully funded MA in Education for teachers as part of their professional learning entitlement.

Funded places are limited, and criteria apply. You can find more details about this [here](#).

If you have any questions, please contact Dr Kaydee Owen (E-mail: kaydee.owen@bangor.ac.uk).

