



COLLABORATING · LEARNING · SUCCEEDING

!! Please share our Bulletin with the whole staff team in your school and encourage all your colleagues to subscribe to our [mailing list](#). !!

MESSAGE FROM GwE

As we come towards the end of another educational year, may I take this opportunity to acknowledge the substantial work undertaken by yourselves and your colleagues in educating your learners in what, yet again, has not been the easiest of years.

As we look forward to the next academic year and to working with you on further embedding the Curriculum, and the implications of the new School Improvement Guidelines, we will have the opportunity to shape the direction of our work and focus on the needs of school support. Inevitably this will be in the context of facing financial challenges and we will do this in an open and transparent manner. Our positive working relationship is a very strong basis to help us address these issues collectively.

Should you wish to discuss anything over the summer, please contact either your Local Authority's Core Lead, your school's link adviser or Euros Davies [Primary and Special Schools Lead] / Elfyn V Jones [Secondary and PRU Lead].

Sincere thanks to you, your staff and school community for all that you have done this year.

Best wishes to you all and enjoy a very well-deserved break over the summer.

Arwyn Thomas
Rheolwr Gyfarwyddwr GwE / GwE Managing Director



Bryn Eirias, Abergele Road,
Colwyn Bay, LL29 8BY



post@gwegogledd.cymru



0300 500 8087



www.gwegogledd.cymru



GwE Support Centre



g6.gwegogledd.cymru



@GwEGogleddCymru



[GwE Gogledd Cymru](#)









Reform Journey Celebration Event – Curriculum for Wales Marketplace★

Thank you to everyone who attended the event on Thursday, 22 June

Resources from the event are now available in the [GwE Support Centre](#)

If you have any resources to add please e-mail cwricwlwmigymru@gwegogledd.cymru

GwE PROFESSIONAL OFFER: SEPTEMBER-OCTOBER 2023

EVENT	VENUE	DATE	MEDIUM	REGISTER	NO. TICKETS AVAILABLE	REGISTRATION CLOSING DATE
On-Entry Assessment	GwE, Bryn Eirias, Bae Colwyn	14/09/2023	Cymraeg		23	13/09/2023 17:00
On-Entry Assessment	GwE, Bryn Eirias, Bae Colwyn	14/09/2023	English		13	13/09/2023 17:00
Workshop for Teachers and TAs new to 3-8	Plas Menai, Caernarfon	27/09/2023	Cymraeg		28	26/09/2023 17:00
Workshop for Teachers and TAs new to 3-8	Gwesty'r Oriel, Llanellwyr	28/09/2023	Cymraeg		30	27/09/2023 17:00
Cluster Support Session – Digital Facilitators	Canolfan Fusnes Conwy	29/09/2023	Cymraeg		50	28/09/2023 12:00
Workshop for Teachers and TAs new to 3-8	GwE, Linden House, Yr Wyddgrug	03/10/2023	English		13	02/10/2023 17:00
Cluster Support Session – Digital Facilitators	Gwesty'r Oriel, Llanellwyr	03/10/2023	English		50	02/10/2023 12:00
Workshop for Teachers and TAs new to 3-8	Gwesty'r Oriel, Llanellwyr	04/10/2023	English		30	03/10/2023 17:00

PROFESSIONAL LEARNING FUNDING FOR SCHOOLS

Welsh Government Grant – Professional Learning Funding for Schools★

[Click here](#) for more information.

NATIONAL PROGRAMMES

National Leadership Development Programmes

Applications will open via a link on the GwE website and GwE Bulletin on the dates below. Applications cannot be submitted prior to the 'Applications open' dates.

For the Aspiring Headteacher Development Programme – preparing for NPQH, please see information on the GwE website, with a link to a Welsh Government statement.

	 Middle Leadership Development Programme	 Senior Leaders Development Programme
Applications open:	12/09/2023	19/09/2023
Deadline for applications:	by 1pm on 05/10/2023	by 1pm on 12/10/2023
Introductory session for successful applicants:	w/c 27/11/2023	w/c 27/11/2023
Programme starts:	January 2024	January 2024
Programme ends:	December 2024	December 2024

Newly Qualified Teachers (NQT)

 [NQT NATIONAL PROFESSIONAL LEARNING OFFER: AUTUMN TERM 2023](#)

Induction Mentors (IM)

 [IM NATIONAL PROFESSIONAL LEARNING OFFER: 2023-2024](#)

EXTERNAL VALIDATOR / EXTERNAL MENTOR (EV / EM)

 [EXTERNAL VALIDATOR / EXTERNAL MENTOR \(EV / EM\) PROFESSIONAL LEARNING OFFER: 2023-2024](#)

Contact Ieuan Jones, GwE with any queries:  ieuanjones@gwegogledd.cymru

Welsh Education Consortia Post-16 Leadership Development Programme

Calling all aspiring, new and existing post-16 leaders! Ready to level up your leadership game? Join our transformative Post-16 Leadership Programme and unlock your full potential as a leader. Gain valuable insights into post-16 education, expand your network, and make a lasting impact on students' lives.

[Sign up today](#) and become an inspiring leader!

RESEARCH AND EVALUATION PROJECTS

Can you help improve the evidence base around spelling instruction?

We're looking for literacy leads in primary schools to complete our questionnaire to help us improve the provision for spelling in Welsh and English.

Through our recent collaborative research with our university partners, GwE has identified the need to examine how approaches to teaching spelling have changed and how these compare against our improved understanding of spelling in the context of the Science of Reading. Over recent years, we have improved our knowledge of spelling instruction, and our research partners have developed more effective ways of teaching spelling. Researchers from Leeds Trinity University and the Collaborative Institute for Education Research, Evidence and Impact (CIERI), Bangor University are working with GwE to evaluate current spelling provision in schools across north Wales. Our aim is to help teachers access evidence-informed spelling approaches to help improve learners' skills in both English and Welsh.

If you are a literacy leader or the person responsible for spelling provision in a primary school, please help us build an accurate picture of current provision by completing our questionnaire using this link:

English: https://ltu.onlinesurveys.ac.uk/demsi_eng

From Evidence-Informed to Evidence-Based: An Evidence Building Framework for Education

NEW GWE COLLABORATIVE PUBLICATION WITH BANGOR UNIVERSITY

[Full details available here.](#)

Access the paper using this link: <https://bera-journals.onlinelibrary.wiley.com/doi/10.1002/rev3.3342>

Improving Fluency in Oral Reading using the Repeated Reading Intervention (iFOR)

Schools are invited to take part in a Repeated Reading evaluation project in the spring term 2024. [Full details here.](#)

This project is a partnership between GwE and CIEREI, Bangor University as part of our evidence-based reading provision that is summarised [here](#).

To learn more and to register an expression of interest, please follow the link: <https://forms.microsoft.com/e/GuDK9izx3x>

Improving Pupils' Basic Numeracy Skills With SAFMEDS

We are recruiting teachers (or teaching assistants) in north Wales to work with a group of 10 learners in Year 3 or Year 4. Initially, the SAFMEDS sessions will focus on building addition skills, during the Autumn term 2023 and the Spring term 2024.

To be eligible to take part in this project your school:

- Must be a mainstream primary school in the GwE region (your school can be a Welsh, English or bilingual setting).
- Will need to identify target learners in Year 3 or Year 4 that will benefit from the SAFMEDS strategy. These learners will need a basic understanding of single digit addition (even if they are not yet fluent). Learners must also be able to turn flashcards independently.
- Will need to identify a teacher or teaching assistant who can attend the training session in October 2023. This should be the same member of staff that will support the SAFMEDS sessions in school.

[Full details available here.](#) To register your expression of interest, [follow this link](#).

GwE NEWS AND INFORMATION

Secondary Humanities Teachers

GwE hopes to plan a Humanities conference for secondary teachers in the Autumn term so that we can share your early efforts and good practice as you've responded to the new Curriculum for Wales. The questionnaire gives us an opportunity to collate some preliminary information about your good practice and will enable us to organise workshops which will respond to your needs. We'd also like to establish a digital network so that we can share key messages and good practice.

Please respond to the questionnaire in light of your planning for Y7 and Y8 learners. It should take 15 minutes and we would be grateful if it could be completed by the end of the Summer term. Please pass the link on to any colleagues who might be interested in responding to the questionnaire and/or joining the Humanities network.

 [Secondary Humanities Questionnaire](#)

Learn Welsh: Advanced Course for Teaching Assistants

 April – July 2024

A course for primary teaching assistants that are fairly fluent speakers – first and second language. [Full details.](#)

GwE Global Futures: International Languages



GwE Support Centre: International Languages - [Primary](#) and [Secondary](#)

For more information about the Global Futures programme, team contacts, links to partners and newsletters, [click here](#).

PROFESSIONAL LEARNING FOR PRIMARY SCHOOL PRACTITIONERS

Teaching resources: Primary Sector

- **Power Language: Planners, resources and ideas to embed languages in the curriculum.**
New schools can still apply. Click here if interested: <https://forms.office.com/r/E71Pye5ahH>
- **Routes Cymru:** Primary Toolkit: [Primary – Routes into Languages Cymru](#)
- **British Sign Language Resources (BSL): Hwb.**
 - [Resources for educators and learners \[approximately 8-14 years old\] to develop their awareness and understanding of BSL](#)
 - [BSL Progress Step 1 Resources](#)



Language upskilling: On-line courses for primary teachers in French and Spanish

Stimulating and engaging professional development for teachers!

Professional Development at your own pace.

Designed **for teachers with limited or no knowledge of the language** they have to teach. Reinvest your learning directly with your class.

Also include podcasts or animations linked to a cultural element.

For more information and to register your interest click here: <https://forms.office.com/e/6GrAqUYRm9>



Learning to teach Languages in Primary Schools- Open University Course- Fully funded

Opportunity to learn an international language and be trained to teach languages in primary schools through the Open University.

Information about the course as well as the registration documents [here](#).

Video about the course: <https://youtu.be/LdByRAUOPwI>

Please return your forms by 25/08/2023 to stephanieelliswilliams@gwegogledc.cymru

HEALTH AND WELL-BEING

CONSULTATION: Child Poverty Strategy for Wales

Welsh Government is seeking your views on the draft [Child Poverty Strategy for Wales](#). It is committed to addressing child poverty as an absolute priority, and the Programme for Government commitments is being shaped and delivered with the need to combat poverty and inequality as a central driver. Contact TacklingPovertyAndSupportingFamilies@gov.wales for further information.

SURVEY: Have your say in this online survey about well-being in your school

Welsh Government is undertaking research to explore how schools and pupil referral units are embedding a Whole School Approach to Emotional and Mental Well-being. [Take part by completing this survey](#).

Counselling Children and Young People (4-18 years) PGDip 2023-2024

Do you want to broaden your counselling skills to work with children and young people? [Click here for further details](#).

CMI Level 5 Award in Professional Team Coaching: [Full details available here](#)

WELSH EDUCATION CONSORTIA NEWS

Realising Potential – Challenge for All

The Welsh Education Consortia MAT team has changed its name to **Realising Potential**.

Why? - The work of the team has evolved to address the national priority of 'challenge for all learners' in order to ensure that all learners are appropriately and equitably supported to meet their full potential. All learners are entitled to be supported in their progress and enabled in realising their aspirations, regardless of their starting point.

We will support schools with a range of professional learning opportunities and resources to enable the development of a clear vision in relation to supporting all learners to embrace high aspirations and realise their potential, as they engage with their learning. Aspects of wellbeing support will be a key consideration, alongside national priorities such as reducing the impact of poverty and disadvantage on progression and attainment, with all support fully aligning with the realisation of the Curriculum for Wales and the Principles of Progression. [Full details available here.](#)

To allow the Realising Potential team to tailor the support needed with the supporting practitioners' themes above, please fill out the following questionnaire to outline your professional learning/support requirements: <https://t.co/gqVLwYJehV>

For more information contact: Mair Herbert - mairherbert@gwegogledd.cymru or Paul Davies – pauldavies@gwegogledd.cymru



MIND E-Learning Mental Health Awareness Programme

The Consortia have collaborated with Mind Cymru to provide professionals working within education across Wales with access to a free 45-minute interactive mental health awareness e-learning package.

To access the programme, please complete [this form](#).

WELSH GOVERNMENT NEWS

United Nations Convention on the Rights of the Child and United Nations Convention on the Rights of Persons with Disabilities Professional Learning



[This resource](#) is designed to help you develop understanding of the United Nations Convention on the Rights of the Child and United Nations Convention on the Rights of Persons with Disabilities, how they are linked to Curriculum for Wales and how to incorporate children's human rights in your work with children and young people.

INFORMATION AND GUIDANCE FROM OTHERS

Pori Drwy Stori Nursery 2023-2024

[Click here](#) to register. [Full details available here](#). Spaces are limited as is time to register. Registration closes: **13 October 2023.**



Media and Event List – nael.cymru

The National Academy for Educational Leadership would like to share the [list of publications, media and events](#) coming up this month.

For more information or to book, visit www.nael.cymru/events



agaa.cymru | nael.cymru



Adnodd: A New Body for Educational Resources in Wales

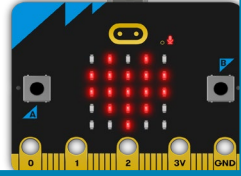
Four Cymru/Miller research are engaging with stakeholders over the coming months in order to gain insights which will inform the development of the commissioning model and the quality assurance framework. Surveys will go live next week. Miller are also holding focus groups with the various stakeholders.

[Full details here.](#)



Free Micro:Bits

Primary schools can now register to receive 30 FREE Micro:Bits. Micro:Bits are great devices to develop coding and computational thinking skills. Don't miss this opportunity - free kit that's worth £450! [Click here for more information.](#)



Enterprising Creative Contributors – Big Ideas Wales

TEACHING AND LEARNING RESOURCE PROPOSAL

Careers Wales, in collaboration with leading academics in the field of enterprise and entrepreneurship, are planning to co-construct a new enterprise teaching and learning resource for 3-16 that reflects the principles and rationale of the Curriculum for Wales. To guide this development, we would like to invite 8 teaching professionals to join a working group to share their ideas, experience and expertise during the autumn term 2023. [Full details available here.](#)

For further details and to register your interest in joining this working group, please contact:



Sean Parry, Project Manager



sean.parry@careerswales.gov.wales



02920 846378