



# GwE Bulletin

COLLABORATING · LEARNING · SUCCEEDING



Please share our **BULLETIN** with the whole staff team in your school and encourage all your colleagues to subscribe to our **MAILING LIST**.



## CONFERENCES

### Professional Learning to Support Developing Progression Through Transition 3-16



Full day session for head teachers and members of senior leadership teams – please note these are new sessions which have been planned following feedback from last year's PontioGwE sessions.

Attendees will:

- Receive clarification of relevant guidance and statutory requirements
- Understand how this fits with national WG priorities and Estyn approaches
- Have the opportunity to listen to an expert speaker – Dave Harris, Independent Thinking – NEW session
- Hear how some schools and clusters are improving their provision for transition 3-16
- Gain answers and clarification to commonly asked questions around transition and progression queries from schools
- Have networking time and opportunities for open discussion and sharing of ideas.



20/10/2023 | 9:15-15:30



[Holiday Inn A55 Chester West](#)



26/10/2023 | 9:15-15:30



[Neuadd Reichel, Bangor University](#)



10/11/2023 | 9:15-15:30



[Conwy Business Centre](#)



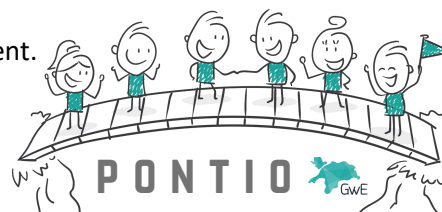
Lunch will be provided.



A full agenda will be shared before the event.

Click on the above links to register.

Places are limited to 2 senior leaders per school.



Bryn Eirias, Abergelle Road,  
Colwyn Bay, LL29 8BY



0300 500 8087



[GwE Support Centre](#)



[post@gwegogledd.cymru](mailto:post@gwegogledd.cymru)



[www.gwegogledd.cymru](http://www.gwegogledd.cymru)



[GwE Professional Offer](#)



[@GwEGogleddCymru](#)



[GwE Gogledd Cymru](#)

## 'Ein Llais Ni' Oracy Programme Event



**Venue: Venue Cymru, Llandudno**



**24/10/2023 | 9:15 - 15:30**

**REGISTER**



Oracy is a powerful tool for progress in all subjects and 'Ein Llais Ni' will equip you to develop increasingly confident Welsh speakers.

The Ein Llais Ni project has evolved and we invite you to an event to share the latest developments as well as have opportunities to obtain ideas and practical resources for developing the Welsh language. Oracy expert Richard Hull from 'Confident Communication' will join us to explore in practice how oracy can be used to inspire pupils to 'find their voice', express opinions, build their confidence and deepen their learning.



This event is for all primary, secondary and special school leaders and teachers who are interested in oracy and need to embed pedagogy within their classes. It is suitable for everyone who wants to learn more about how the Ein Llais Ni programme can support you in developing Welsh speaking and listening skills.



## Datblygu siaradwyr y dyfodol

Developing oracy skills



## Developing the Love of Reading with Neil Griffiths

Neil Griffiths is a former Primary School Headteacher and a highly popular author of many children's picture books and educational publications. He was also the director of the National Literacy Support Project for the Basic Skills Agency.

On meeting Neil, you will soon discover his passion for children and desire to create an education system that suits the child and creates decent human beings who contribute positively to the world. He believes whole-heartedly in a child-centred approach to learning that couples rigour in planning with enthusiastic teaching and original starting points.

The opportunity to listen to Neil doesn't come around often - please make every effort to attend this inspirational speaker event who will undoubtedly impact your reading provision. [Click here](#) for further information.

DATE	VENUE	TIME		REGISTRATION LINK	
13/11/2023	Holiday Inn, A55	MORNING SESSION 9:30-11:45	AFTERNOON SESSION 13:00-15:15	<a href="#">MORNING</a>	<a href="#">AFTERNOON</a>
14/11/2023	Porthmadog Football Club	MORNING SESSION 9:30-11:45	AFTERNOON SESSION 13:00-15:15	<a href="#">MORNING</a>	<a href="#">AFTERNOON</a>
15/11/2023	M-Sparc, Gaerwen	MORNING SESSION 9:30-11:45	AFTERNOON SESSION 13:00-15:15	<a href="#">MORNING</a>	<a href="#">AFTERNOON</a>
16/11/2023	Conwy Business Centre	MORNING SESSION 9:30-11:45	AFTERNOON SESSION 13:00-15:15	<a href="#">MORNING</a>	<a href="#">AFTERNOON</a>

## Writing: AFL Strategies to Progress Writing [Ages 8-11]



13/11/2023 | 13:30 - 16:30



Venue Cymru, Llandudno


[REGISTER](#)

For primary ages 8-11: an afternoon with Shirley Clarke, who will demonstrate how to co-construct success criteria with your learners, focusing on the meaning and impact of doing this effectively. She will also focus on how to feedback using on the move commentary during writing sessions in the classroom and how this leads to improvements in the content of writing.



## Conference for Secondary Humanities Teachers



16/11/2023 | 9:15 - 15:30



Festival Church Towyn, 87 Gors Road, Towyn, Abergele, LL22 9NR

There will be an opportunity for teachers to listen to presentations and to share emerging practice. [Click here](#) for further information.



## GwE PROFESSIONAL OFFER

EVENT	VENUE	DATE	MEDIUM	REGISTER	TICKETS AVAILABLE*	REGISTRATION CLOSING DATE
English Literacy Leaders Forum	Conwy Business Centre	17/10/2023	ENG	<a href="#">REGISTER &gt;&gt;&gt;</a>	44	13/10/2023
Literacy Leads Network	Venue Cymru	17/10/2023	CYM	<a href="#">REGISTER &gt;&gt;&gt;</a>	16	16/10/2023
Secondary Schools Digital Network [Anglesey & Gwynedd]	Galeri, Caernarfon	17/10/2023	CYM	<a href="#">REGISTER &gt;&gt;&gt;</a>	21	16/10/2023
Digital Overview of Progression Steps 1 & 2	GwE Office, Penrallt	18/10/2023	CYM	<a href="#">REGISTER &gt;&gt;&gt;</a>	10	19/09/2023
Secondary Schools Digital Network [Conwy & Denbighshire]	Conwy Business Centre	18/10/2023	BILINGUAL	<a href="#">REGISTER &gt;&gt;&gt;</a>	11	17/10/2023
Secondary Schools Digital Network [Flintshire & Wrexham]	Oriel House	19/10/2023	ENG	<a href="#">REGISTER &gt;&gt;&gt;</a>	11	18/10/2023
Digital Overview of Progression Steps 1 & 2	Beaufort Park Hotel	19/10/2023	ENG	<a href="#">REGISTER &gt;&gt;&gt;</a>	10	20/10/2023
Developing Progression through Transition 3-16	Holiday Inn A55 Chester West	20/10/2023	BILINGUAL	<a href="#">REGISTER &gt;&gt;&gt;</a>	95	20/10/2023
Developing Self-Improvement Culture	The Racecourse Ground, Wrexham	24/10/2023	ENG	<a href="#">REGISTER &gt;&gt;&gt;</a>	23	23/10/2023
'Ein Llais Ni' Oracy Programme Event	Venue Cymru	24/10/2023	CYM	<a href="#">REGISTER &gt;&gt;&gt;</a>	100	18/10/2023
Developing Self-Improvement Culture	Porthmadog Football Club	25/10/2023	CYM	<a href="#">REGISTER &gt;&gt;&gt;</a>	30	24/10/2023
Developing Progression through Transition 3-16	Neuadd Reichel Bangor University	26/10/2023	BILINGUAL	<a href="#">REGISTER &gt;&gt;&gt;</a>	92	26/10/2023

\*Numbers correct at time of publication.



Keep your eye on the [GwE Professional Offer](#) page on our website. The page is often updated to include all new events that GwE offer.

## NATIONAL PROGRAMMES

### Newly Qualified Teachers [NQT]

 [NQT NATIONAL PROFESSIONAL LEARNING OFFER: AUTUMN TERM 2023](#)

### Induction Mentors [IM]

 [IM NATIONAL PROFESSIONAL LEARNING OFFER: 2023-2024](#)

### EXTERNAL VALIDATOR / EXTERNAL MENTOR [EV / EM]

 [EXTERNAL VALIDATOR / EXTERNAL MENTOR \[EV / EM\] PROFESSIONAL LEARNING OFFER: 2023-2024](#)

Contact Ieuan Jones, GwE with any queries:  [ieuanjones@gwegogledd.cymru](mailto:ieuanjones@gwegogledd.cymru)

## Welsh Education Consortia Post-16 Leadership Development Programme

Calling all aspiring, new and existing post-16 leaders! Ready to level up your leadership game? Join our transformative Post-16 Leadership Programme and unlock your full potential as a leader. Gain valuable insights into post-16 education, expand your network, and make a lasting impact on students' lives.

[Sign up today](#) and become an inspiring leader!

## TEACHING ASSISTANTS LEARNING PATHWAY [TALP]



### Aspiring HLTA Development Programme



Cylch/Round 8 of the Aspiring HLTA Development Programme starts in January 2024. The **CLOSING DATE** for applications is **24/11/2023**.

[Click here](#) for more information about the Programme and the application process.

For further information, please contact [Wendy Williams, TALP Co-ordinator](#).



### Network for Teaching Assistants

 **07/11/2023 | 15:45-16:15**  [JOIN](#)

Informal bilingual session over [MS Teams](#) to share information and good practice.

For more information, contact [Elin Hutchinson](#).



## RESEARCH AND EVALUATION PROJECTS

### Improving Fluency in Oral Reading using the Repeated Reading Intervention [iFOR]

Schools are invited to take part in a Repeated Reading evaluation project in the spring term 2024. [Full details here](#). This project is a partnership between GwE and CIEREI, Bangor University as part of our evidence-based reading provision that is summarised [here](#).

To learn more and to register an expression of interest, please follow the link:

<https://forms.microsoft.com/e/GuDK9izx3x>

## Can you help improve the evidence base around spelling instruction?

We're looking for literacy leads in primary schools to complete our questionnaire to help us improve the provision for spelling in Welsh and English.

Through our recent collaborative research with our university partners, GwE has identified the need to examine how approaches to teaching spelling have changed and how these compare against our improved understanding of spelling in the context of the Science of Reading. Over recent years, we have improved our knowledge of spelling instruction, and our research partners have developed more effective ways of teaching spelling. Researchers from Leeds Trinity University and the Collaborative Institute for Education Research, Evidence and Impact (CIEREI), Bangor University are working with GwE to evaluate current spelling provision in schools across north Wales. Our aim is to help teachers access evidence-informed spelling approaches to help improve learners' skills in both English and Welsh.

If you are a literacy leader or the person responsible for spelling provision in a primary school, please help us build an accurate picture of current provision by completing our questionnaire using [this link](#).

## GwE NEWS AND INFORMATION

### 3-8 Network Meetings [for SLT, Teachers and Teaching Assistants]

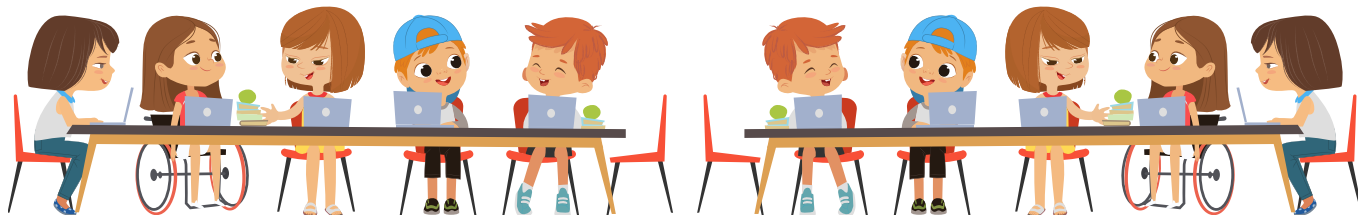
Local, regional and national issues regarding the 3 to 8 age group will be discussed and successful practice will be shared.

#### Focus of Network:

Digital – Ideas about how to plan progression in digital skills within provision for 3 to 8 year olds.

**There is no need to register for the network meetings. Practitioners can attend any venue.**

DATE	TIME	VENUE	LANGUAGE
20/11/2023	16:00-17:00	Ysgol Hiraddug, Dyserth	English
21/11/2023	16:00-17:00	Ysgol Pen y Bryn, Colwyn Bay	English
22/11/2023	16:00-17:00	Mountain Lane School, Buckley	English
23/11/2023	16:00-17:00	Ysgol Maes y Mynydd, Rhosllanerchrugog	English



### GwE Digital Bulletin

[Click here](#) for the latest information from the Digital Team.





## Personalised Assessments: Important Changes for September 2023


[Click here](#) for the latest information on system availability and guidance for the 2023-2024 academic year.

## GwE Global Futures: International Languages



**GwE Support Centre:** International Languages - [Primary](#) and [Secondary](#).

For more information about the Global Futures programme, team contacts, links to partners and newsletters, [click here](#).

 **USEFUL LINKS:** [Contacts and Links](#) **Newsletters:** [Primary](#) | [Secondary](#).

### PROFESSIONAL LEARNING FOR PRIMARY AND SECONDARY SCHOOLS

#### International Languages Primary Forums

[Click here](#) for all information and registration.

#### International Languages Secondary Forums

[Click here](#) for all information and registration.

#### Sessions with our Routes Cymru Language Ambassadors

Routes Cymru Student Language Ambassadors will be available to deliver talks and sessions for primary and secondary schools in Wales after October half term 2023. Schools can find more information and register for these sessions on the [Routes Cymru website](#) or by emailing [info@routesintolanguagescymru.co.uk](mailto:info@routesintolanguagescymru.co.uk) by **17/11/2023**.

#### Language upskilling: On-line courses for primary teachers in French and Spanish

Stimulating and engaging professional development for teachers! Professional Development at your own pace. Designed for teachers with limited or no knowledge of the language they have to teach. Reinvest your learning directly with your class! Also include podcasts or animations linked to a cultural element.

For more information and to register your interest [click here](#).



## Framework for Evaluation, Improvement and Accountability

### Guidance on the Summaries that Schools need to Prepare

The Welsh Government framework for school improvement will be statutory in September 2024. The guidance states an expectation for all schools to publish a summary for parents, which shares information about the school's self-evaluation conclusions, progress against previous priorities, high-level improvement priorities and the external support a school will access to achieve its priorities. In order to prepare for this expectation, a group of schools, in collaboration with GwE, have jointly created example model documents to support schools across the Region. The virtual Teams meetings to share the group's work have now been. If you would like access to the presentation, templates/examples and recordings of the session they are available [here](#).

## Towards 2024: Developing High Quality Teaching & Learning [8-11 Teachers]

The project seeks to work in collaboration with 8-11 age range teachers to further strengthen and support self-evaluation and school improvement towards realising the Curriculum for Wales, through evaluating and developing current curriculum approaches, progression and pedagogy.

**Full details available [here](#).** For further information, please contact [tracyjones@gwegogledd.cymru](mailto:tracyjones@gwegogledd.cymru). To register your interest, complete [this form](#).

## Questionnaire: Secondary Humanities Teachers

If you haven't done so already, please could you complete our secondary humanities teachers' questionnaire. Please respond to the questionnaire in light of your planning for Y7 and Y8 learners. It should take 15 minutes and we would be grateful if it could be completed by the end of this half term. Please pass the link on to any colleagues who might be interested in responding to the questionnaire and/or joining the Humanities network.

 <https://forms.office.com/e/Y1rVHKq9ty>.

## Are you looking to progress Reading for Pleasure within your school this year?



05/12/2023 | 9:15-12:30



Venue Cymru, Llandudno



[REGISTER](#)

Come and join colleagues for the morning, who have been working on this in previous terms, to hear the journeys and the progress they have made in creating a culture for reading for pleasure and the strategies they have put in place to make this happen. We will hear from you and share your successes and your findings, learn more about how we can promote this vital link in the reading journey for learners to bring them closer to becoming successful readers.

This network will continue throughout the year to bring us together to explore more effective strategies and resources and will include specialist insight from academics and educationalists in the field of reading. In this meeting in December, Professor Manon Jones from Bangor University will share with us how learners develop key reading skills and how we can effectively implement strategies and policy to support our learners.



## Y GYMRAEG [WELSH]

### School Workforce Annual Census [SWAC]: 07/11/2023



#### PLANNING WELSH LANGUAGE DEVELOPMENT FOR PRACTITIONERS

This [playlist](#) will support school leaders to accurately report on practitioners' Welsh language skills against the [Welsh Language Competency Framework](#) whilst undertaking the [School Workforce Annual Census \(SWAC\)](#), and to strategically plan appropriate professional learning to develop language competence for all practitioners.

You will need to sign into your Hwb account to gain access to this playlist.

### Shwmae Su'mae Day



15/10/2023

Shwmae Su'mae day will celebrate its 10th anniversary this year - can you do 3 things in Welsh to celebrate the ten?! As the 15th is on a Sunday this year, make sure you celebrate at school, college or the workplace during the week before!

It's an opportunity to have fun and share the language - in the shop, the leisure centre, at work, at school, on the playground and with your friends, online or face to face! The important thing is to recognize and celebrate the day in whatever way you can!

For events, [click here](#).



### Welsh Language Sabbatical Courses

#### ADVANCED COURSE FOR TEACHING ASSISTANTS [APRIL-JULY 2024]

Are you a fairly fluent Welsh speaker [first and second language]? Need more information? [Click here](#).

CYMRAEG



## Are you Interested in Learning Welsh?



**What level are you?** Which level am I?



**What's on offer?**

A wide choice! Including courses tailored for the education workforce. Different learning methods including self-study, and an opportunity to join community-based courses. [Education Workforce](#) | [Learn Welsh](#)



**Need more information?**

Contact your Local Authority or GwE:

**Gwynedd** [SianParryEurig@Gwynedd.llyw.cymru](mailto:SianParryEurig@Gwynedd.llyw.cymru) **Anglesey** [OwenDavies@ynysmon.llyw.cymru](mailto:OwenDavies@ynysmon.llyw.cymru)

**Conwy** [diane.evans@conwy.gov.uk](mailto:diane.evans@conwy.gov.uk)

**Denbighshire** [gareth.williams@denbighshire.gov.uk](mailto:gareth.williams@denbighshire.gov.uk)

**Flintshire** [rhian.roberts@flintshire.gov.uk](mailto:rhian.roberts@flintshire.gov.uk)

**Wrexham** [Dwynwen.Jones@wrexham.gov.uk](mailto:Dwynwen.Jones@wrexham.gov.uk)

**GwE** [SgiliaulaithGymraeg@gwegogledd.cymru](mailto:SgiliaulaithGymraeg@gwegogledd.cymru)

## Open Days – Welsh in Our School

AN INSIGHT INTO HOW YOU COULD DEVELOP THE WELSH LANGUAGE WITHIN YOUR CURRICULUM

**\*FOR PRIMARY SCHOOLS\***

Register your interest in visiting the school (limited places available).

### OPEN MORNING

#### DEVELOPING WELSH IN AN ENGLISH-MEDIUM SCHOOL

To be held at Ysgol Y Llan, Whitford, Holywell (CH8 9AN)

**When:** 19/10/2023 – 9:15-12:00

An opportunity to learn about the school's vision for the Welsh language and its impact on learners, including a presentation by the Senior Leadership Team, discussions with learners and teaching staff whilst visiting classrooms and to see how the Welsh language is integrated into daily assembly.

**Audience:** Members of the senior leadership team in English-medium primary schools (space for a limited number)

To register your interest in attending please fill out [this form](#)

For further information, contact Rhian Roberts: [rhian.roberts@flintshire.gov.uk](mailto:rhian.roberts@flintshire.gov.uk)

Lunch is not provided.



## Ysgol Aberconwy School - Siarter Iaith Uwchradd (GwE) accreditation

### BRONZE AWARD

On 15/09/2023, Ysgol Aberconwy received the Siarter Iaith Uwchradd (GwE) Bronze Award, the first secondary school in the region to receive this award. Luned Parry (Deputy Head of the Welsh Department) collaborated with GwE's Welsh Language Team during the past year to collate the evidence for the award, and it was overwhelming for Luned and the school to realize how much had been done over the years to promote the Welsh language and the benefits of bilingualism among their learners. Throughout their journey, the school's vision and the support of the Headteacher, Mr Ian Gerrard and the Senior Leadership Team at Ysgol Aberconwy has been truly inspiring. Teamwork has won this award and the journey continues. . . onwards to the Silver Award!





## HEALTH AND WELL-BEING

### TEDx Talks and Well-being Festivals **TEDx**

Please [click here](#) for further information.

To register interest and to organise a chat about how your school can get involved, please contact Sarah Harvey at Wrexham University on 0789 468 077 or email [sarah.harvey@glyndwr.ac.uk](mailto:sarah.harvey@glyndwr.ac.uk).

### SHRN - School Health Research Network Webinars

Please find below the links to two recent SHRN webinars, which may be of interest.

#### Primary SHRN: Student Health and Well-being Survey 2022/23 - National Findings

Dr Kelly Morgan, Dr Caitlyn Donaldson and Amy Edwards, Cardiff University, present their findings from the recent round of primary school data collection. <https://www.youtube.com/watch?v=jxVpM1RMW0>

#### School-Based Interventions to Prevent Dating and Relationship Violence and Gender-Based Violence

Dr GJ Melendez-Torres, Exeter University, presents findings from a recent study.

<https://www.youtube.com/watch?v=Yfhey45Qlq8>

If you have any questions for the SHRN team, or would be interested in attending future webinars, please email them to [shrn@cardiff.ac.uk](mailto:shrn@cardiff.ac.uk)




### The School Health Research Network [SHRN] e-News for Primary Schools

Please [click here](#) for the newsletter.

## WELSH GOVERNMENT NEWS



### Headteachers: Interested in a conversation with the Minister for Education & Welsh Language?

 12/10/2023 | 16:30-17:30

If you'd like the opportunity to take part in an open and informal chat with the Minister, please email [Dysg@gov.wales](mailto:Dysg@gov.wales)

### Consultation



[Curriculum for Wales: continuing the journey](#)

### Vaping guidance for secondary schools



[Guidance](#)



[Press Notice](#)

### [Commission for Tertiary Education and Research Newsletter](#)



## GEM Cymru Research into Heritage Learning & the New Curriculum

As part of the Group for Education in Museums Welsh Government Culture Division funded work for 2023-4, GEM are commencing evaluation and analysis of the outcomes / impact of the projects it has undertaken in Wales since 2021. This includes reviewing how successfully heritage learning has engaged with the Curriculum for Wales (CfW), how schools are engaging with museums, archives and local studies libraries, identifying gaps in provision and exploring the support needs for local heritage venues moving forward.

Would it be possible for you to give your opinion on these three key areas:

- Since the introduction of the new curriculum do you think that schools are engaging more with their local heritage? If so, how?
- What do you think the priorities should be for heritage learning services moving forward (related to the CfW)?
- How do you see the relationship between schools and local heritage venues changing over the next few years? Has it already changed?

If you would like to discuss your thoughts further, contact [Robin Johnson](#).



## WELSH EDUCATION CONSORTIA NEWS



### Cross-regional Curriculum for Wales Professional Learning Offer

To support all schools and settings across Wales in realising the Curriculum for Wales, a comprehensive professional learning programme has been developed by the cross-regional Professional Learning team.

The **Programme for 2023/24** has now been published, please see the **brochure** for key dates and links to the virtual sessions.

### ASSESSMENT SESSIONS

Sessions are available for both Senior Leaders and Middle Leaders/Teachers with a focus on progression and assessment. These sessions will provide a mixture of reviewing policy guidance and practical support for practitioners.

SESSION	SESSION OBJECTIVES	DATE
Building effective assessment practices	<p>Leaders and teachers will gain knowledge and understanding of:</p> <ul style="list-style-type: none"> <li>• Considerations for effective assessment cycles in the context of CfW</li> <li>• Considerations for how often we can assess using different modes of assessment and the approaches to assessment for different purposes</li> <li>• The types of assessment that will allow us to make good formative and diagnostic inferences</li> </ul>	16/10/2023
What is our long-term plan for progression?	<p>Leaders and teachers will gain knowledge and understanding of:</p> <ul style="list-style-type: none"> <li>• Considerations for long-term planning for progression, including how often key concepts from the Statements of What Matters can be revisited</li> <li>• Exploring approaches to planning for progression and assessment in different disciplines and Areas</li> <li>• Setting learning intentions to support progress in the short to medium term</li> </ul>	23/11/2023

All sessions will be recorded and are available to watch again asynchronously on this link: [Welsh Education Consortia - Curriculum for Wales Professional Learning](#)

## AoLE SESSIONS

Specific sessions have been designed to support you in developing teaching and learning in each of the Areas of Learning and Experience. Here is this term's offer:

SESSION	SESSION OBJECTIVES	DATE
Science and Technology	<p>Leaders and teachers will gain knowledge and understanding of:</p> <ul style="list-style-type: none"> <li>How to develop the Science and Technology AoLE through cluster working, focusing on planning a 3-16 curriculum, including school examples</li> <li>Opportunities to share and discuss approaches from schools and settings across Wales</li> </ul>	26/10/2023
Health and Well-being	<p>Leaders and teachers will gain knowledge and understanding of:</p> <ul style="list-style-type: none"> <li>Overarching curriculum design for the Health and Well-being AoLE</li> <li>Processes and reflections from developing the Health and Well-being AoLE, including school examples</li> <li>Opportunities to share and discuss approaches from schools and settings across Wales</li> </ul>	07/11/2023
Expressive Arts	<p>Leaders and teachers will gain knowledge and understanding of:</p> <ul style="list-style-type: none"> <li>Planning for progression within disciplines in the Expressive Arts AoLE, including school examples</li> <li>Opportunities to share and discuss approaches from schools and settings across Wales</li> </ul>	16/11/2023
Languages, Literacy and Communication	<p>Leaders and teachers will gain knowledge and understanding of:</p> <ul style="list-style-type: none"> <li>Planning for progression within clusters, focusing on progression within a 3-16 curriculum, including school examples</li> <li>Opportunities to share and discuss approaches from schools and settings across Wales</li> </ul>	21/11/2023
Humanities	<p>Leaders and teachers will gain knowledge and understanding of:</p> <ul style="list-style-type: none"> <li>How to plan for progression within the Humanities AoLE, including school examples</li> <li>Opportunities to share and discuss approaches from schools and settings across Wales</li> </ul>	21/11/2023
Mathematics and Numeracy	<p>Leaders and teachers will gain knowledge and understanding of:</p> <ul style="list-style-type: none"> <li>Progression and assessment within the Mathematics and Numeracy AoLE, including school examples</li> <li>Opportunities to share and discuss approaches from schools and settings across Wales</li> </ul>	06/12/2023

You can join the sessions through links in [this Programme](#)

Welsh and English sessions are available. There are also sessions during school and after School hours. They will also be available to you asynchronously on [this website](#)

## Coaching and Mentoring Programme

Places available this term on the National Coaching and Mentoring Programme. For further information and/or to register your interest, [click here](#).



## INFORMATION AND GUIDANCE FROM OTHERS

### Natural Resources Wales: Newsletter [October]

Natural Resources Wales' Education, Learning and Health newsletter has been published.

[Here's a link to it.](#)



Cyfoeth Naturiol Cymru  
Natural Resources Wales



### An Introduction to International Exchanges for Schools with Taith

18/10/2023 - 10:00-12:00 - Ysgol Dyffryn Conwy, Llanrwst

Attendees will learn about the programme, the types of activities that can be supported for schools, planning a project and how to apply for funding. Join us to find out what being part of an international project involves and how international collaboration can benefit schools and pupils.

[Click here](#) for further details and registration details.



### Pori Drwy Stori - BookTrust Cymru

#### Pori Drwy Stori: Nursery

There are a very limited number of spaces available and limited time to register this year, **registration closes: 23/10/2023**. [Click here](#) for further information. To register, follow [this link](#).

#### Pori Drwy Stori Reception Class Resources: Autumn Term

All Reception classes in Wales should have received Pori Drwy Stori resources for the autumn term in July.

[Click here](#) to view the resources to be used this term.



### Enterprising Creative Contributors

#### Professional learning for 3-16 teaching practitioners

Careers Wales, in collaboration with Regional Consortia, is pleased to be able to offer a series of free **professional learning opportunities on Enterprising Creative Contributors** for 3-16 teaching practitioners across Wales during the autumn and spring terms.

[Click here](#) for further information or contact [sean.parry@careerswales.gov.wales](mailto:sean.parry@careerswales.gov.wales)



Gyrfa Cymru  
Careers Wales

### Tackling the Impact of Poverty on Education programme

Join many other schools across Wales who are making **SMALL CHANGES** in day to day functions but **BIG DIFFERENCES** to the lives of those learners whose families are affected by lower incomes and the rising costs of living.

Sign up for FREE to the Tackling the Impact of Poverty on Education programme using the Price of Pupil Poverty Guides.

You will receive access to a Community Platform for the sharing of ideas and best practice and a comprehensive toolkit to help guide your school's planning.

For further information please contact: [pupilpoverty@childreninwales.org.uk](mailto:pupilpoverty@childreninwales.org.uk) or sign up [here](#).

The guides can be found on the Welsh Government's Education website: [HWB](#)



PLANT YNG NGHYMURU  
CHILDREN IN WALES